

4th March 2019

Upcoming Dates

MARCH

Monday 4th
Y5 Swimming

Thursday 7th
World Book Day
(Dress as your favourite book character)

Friday 15th March
Red Nose Day 2019

Tuesday 26th
Mrs Tanner's Class – Trip

Thursday 28th
Miss Palser's Class – Trip

Friday 29th
Mr Newton's Class – Trip

APRIL
Tuesday 2nd
Y5/6 - Trip

May
Friday 24th
INSET Day

Headteacher's Award

Friday 1st March 2019

GC Elder
Georgia W

CE Chestnut
Oliver A

DB Birch

CW Maple

SR Hazel

LSM Rowan
Sophie C

LST Hawthorn
Lucy T

SH Beech
Lola H

ELP Holly
Kyle W

JT Ash
Alexi V

RN Sycamore
Miley J

Class of the Week

11th – 15th February 2019

Mrs Tanner's Class –98.62%

(Whole school attendance for the week: 97.06%)

(Whole School current attendance: 96.52%)

(Target 97%)

Thursday 7th March

World Book Day

(Dress as your favourite book character – No Football Kits)

EXTRA CURRICULA ACTIVITIES

	Lunchtime	Afterschool
Monday		Y1/2 Multi Skills (4 of 9)
Tuesday	Cross Country	
Wednesday	Football	
Thursday	Netball Singing club 5/6	Singing Club 3.30 pm - 4.15 pm Library – 3.30 pm – 4.00 pm KS2 Table Tennis (4 of 9)
Friday	Singing Club Cross Country	

REMINDER

Chasewater Residential

First Instalment due 1st March

Procedures for inclement weather

Snow fall does not trigger a closure of a school and we are aware of the impact snow can have on travel. Therefore, we will make allowances for lateness and arrangements for early pickups to allow for any severe travel disruption as a result of inclement weather.

However, in extreme cases there may be no other alternative than to close, or part close the school. In such an event notification will be available through a number of sources, however our most efficient would be to use our facility to send texts and emails to you (please ensure we have your up-to-date email and mobile number).

We would endeavour to make any such decision as early as possible and would only close as a last resort.

Other notifications will include:

- local radio stations
- Staffordshire school closure website

<http://www.staffordshire.gov.uk/education/schoolsandcolleges/emergencyclosures/schoolclosurelist/schoolclosurelist.aspx>

• **You may also wish to sign up for alerts:** [Sign up for school closure alerts](#) via text message and email, to be kept informed if our school is closed. This is a simple procedure where you just need to register your details to trigger a notification.

- School website
www.cotongreenprimary.com

REMINDER

If your child has sickness and / or diarrhoea, school policy is that your child should not return to school until 48 hours from the last symptom.

Thank you for your co-operation.

Notice to Parents/Carers

Please note final Inset Day has been set:

FRIDAY 24th MAY 2019

School will be closed to pupils

Road Work News

Please be aware from

Monday 25th Feb - 12th March

Coton Lane will be closed from the junction of **Claremont Road** to the **Sewage Works. Fontenaye Road** will still be accessible from the Fox Inn end. There will be diversion routes in place that will be sufficiently signposted.

Required ASAP

Senior Kids' Zone Club Supervisor

Grade 3 SCP 10 – 13 £16,863 pro rata

20 hours per week – Monday to Friday 6 hours am & 14 hours pm

We have a vacancy in our very successful breakfast & afterschool club for a Senior Supervisor to provide before and after school care. The successful person will:

- Help plan a range of suitable activities for children.
- Have a basic knowledge of computer systems.
- Have at least a NVQ Level 3 qualification in child care.
- Basic food hygiene certificate.
- Basic First Aid Certificate.
- Treat all children as individuals and have a secure knowledge and understanding of their needs while they are within our care.
- Motivate and encourage the children to participate in activities.
- Help to promote the children's self-esteem.
- Encourage acceptance of children with special needs.
- Ensure a clean, tidy environment conducive to fostering good Health and Safety practice.
- Follow statutory and non-statutory policies and procedures required for the efficient running of the club.
- Organise and supervise the work of other breakfast and afterschool staff.
- To help prepare nutritional snacks for children.
- Ensure the welfare and safety of children within our care.
- Promoting good behaviour within the group.
- To be ready at all times in case of emergency situations.

For further information and an application pack please contact the school office on 01827 337456.

Closing Date: Friday 8th March at 9.00 am

Interviews will be held: Thursday 14th March

This school is committed to safeguarding and promoting the welfare of children and young people/vulnerable adults and expect all staff and volunteers to share this commitment.

This position is subject to an Enhanced Disclosure check under the Rehabilitation of Offenders Act 1974. Further details regarding this check are available from schools or by visiting www.crb.gov.uk



Coton Green Pre-School Nursery
STAY AND PLAY

Date & Times - Wednesdays 1:15pm - 2:45pm

Price - £1.50

Age - 0-4 years



Craft and messy play

Snack time

Stories and songs

Make new friends

Help your child learn through play

**COTON GREEN PRE-SCHOOL NURSERY
(WITHIN THE GROUNDS OF COTON GREEN PRIMARY SCHOOL)**

Kipling Rise
Coton Green
Tamworth
Staffordshire
B79 8LX

Tel: 01827 337464

www.cotongreennursery.co.uk
cotongreenpreschoolnursery@yahoo.co.uk

Coton Green Primary School – School Terms and Holiday Dates 2018/2019

Autumn Term 2018

Staff: Monday 3 September **Inset Day:1**

Pupils: Tuesday 4 September

Staff: Friday 26th October **Inset Day: 2**

Holiday: Monday 29 October - Friday 2 November

Staff: Monday 5th November **Inset Day: 3**

Term ends: Friday 21 December

Holiday: Monday 24 December - Friday 4 January

Spring Term 2019

Term starts: Monday 7 January

Half term: Monday 18 February - Friday 22 February

Term ends: Friday 12 April

Holiday: Monday 15 April - Friday 26 April

Easter Sunday: Sunday 21 April

Summer Term 2019

Term starts: Monday 29 April

May Day: Monday 6 May

Staff: Friday 24th May **Inset Day: 5**

Half term: Monday 27 May - Friday 31 May

Term ends: Monday 22 July **Inset Day: 4**

Holiday: Tuesday 23 July - Friday 30 August

Staff Total: 195 days Pupil Total: (pupils are required to attend for 190 days)

(Monday 3rd September 2018 is already fixed as an Inset day and the other four days are to be identified by schools. Coton Green Primary have worked with other schools to try and align our Inset days where possible).

Coton Green Kids' Zone

Breakfast Club

Runs from 8.00 am – 8.45 am

Please be aware food cannot not be prepared after 8.30 am.

Thank you for your co-operation

REMINDER

It is school policy that dogs are not allowed on school premises at any time.

This includes leaving dogs unattended at school entrances.

The safety of all in our learning family is our number one priority.

Thank you for your continued co-operation.

Coton Green Kids' Zone

Monday to Friday

8.00 am – 8.45 am and 3.30 pm – 5.30 pm

If you wish to arrange a long term booking in advance, please see the Kids' Zone team

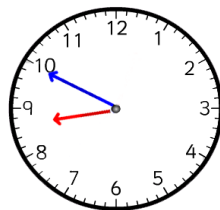
❖	Breakfast Club	£3.25 per day
❖	After School Club	£7.00 per day
❖	Both (wrap around care)	£10.00 per day
❖	Sibling rate for wrap around care	£9.00 per day

Please complete the booking form and send in to the school office or direct to the Kids' Zone club the week before to avoid disappointment.

Payment via ParentPay please.

Booking forms are available from either the school office or Kids' Zone team

NOTICE FOR PARENTS / CARERS



School punctuality is important and we would like to thank parents for their commitment in ensuring children arrive in good time for the 8:50 early work opening.

Please also be aware that children who are on site are the responsibility of parents and carers until handover at the classroom doors at 8:50.

During this time, it is important that children uphold the same high standards of behaviour as they do during school time.

We thank you in advance for your co-operation in this matter.

Food Allergies

If your child has a food allergy, please collect a 'Chartwells Special Diet Request Form' from the school office.

Morning Break Sales

Toast	20p	American Pancakes	35p
Cheese on Toast	50p	Jam on Toast	30p
Tea Cake	35p	Half Bagel (toasted)	30p
Half Cheese Bagel	45p	Oatcake with Cheese	60p
Fruit Pot	30p	Crumpet with honey	30p
Veggie Sticks	25p		

500ml Water	35p	Fresh Milk	20p
Flavoured Milk	60p	Orange/Apple Shot 85ml	30p
Fruit Juice Beaker 150ml	35p	Hot Chocolate	50p

Please complete your menu choice for the week on a Monday morning to avoid disappointment.

Thank you



Week Commencing 4 th March 2019			Week 3	
Child's Name:			Class:	
<i>Monday</i>	Mozzarella & Tomato Pizza with Jacket Wedges Green Beans, Sweetcorn Fresh seasonal Salad Bar	(v) Baked Bean & Cheese Wrap Green Beans, Sweetcorn Fresh seasonal Salad Bar	Jacket Potato with a choice of filling	Choice of Assorted Sandwiches
<i>Tuesday</i>	Pork Sausages with Creamy Mashed Potato, Broccoli, Sweetcorn Fresh Seasonal Salad Bar	(V) Vegetable Lasagne Broccoli, Sweetcorn Fresh seasonal Salad Bar	Jacket Potato with a choice of filling	Choice of Assorted Sandwiches
<i>Wednesday</i>	Roast Turkey with Roast Potatoes & Gravy Seasonal Cabbage, Carrot Batons Fresh Seasonal Salad Bar	(v) Quorn Roast with Roast Potatoes & Gravy Seasonal Cabbage, Carrot Batons Fresh seasonal Salad Bar	Jacket Potato with a choice of filling	Choice of Assorted Sandwiches
<i>Thursday</i>	Beef Lasagne with Garlic and Herb Bread Wedge. Roasted Vegetables Fresh Seasonal Salad Bar	(v) Vegetable Korma with Rice Roasted Vegetables Fresh seasonal Salad Bar	Jacket Potato with a choice of filling	Choice of Assorted Sandwiches
<i>Friday</i>	Golden Cod Fish Fingers or Crispy Salmon Filet Fish Fingers with Chips Peas, Carrots, and Baked Beans Fresh Seasonal Salad Bar	(v) Quorn Sausage & Tomato Pasta Bake, Carrot Batons, Peas and Baked Beans Fresh seasonal Salad Bar	Jacket Potato with a choice of filling	Choice of Assorted Sandwiches
Subject to availability				