

## 25th March 2019

### Upcoming Dates

#### MARCH

Monday 25<sup>th</sup> March - 5<sup>th</sup> April  
BIG PEDAL

Monday 25<sup>th</sup>  
Y5 Swimming

Tuesday 26<sup>th</sup>  
Mrs Tanner's Class – Trip  
EYFS/KS1 – PTFA Film Night 3.30 pm – 5.45 pm

Wednesday 27<sup>th</sup>  
KS2 PTFA Film Night 3.30 pm – 5.45 pm

Thursday 28<sup>th</sup>  
Miss Palser's Class – Trip

Friday 29<sup>th</sup>  
Mr Newton's Class – Trip

#### APRIL

Monday 1<sup>st</sup>  
Y5 Swimming

Tuesday 2<sup>nd</sup>  
Y5/6 - Trip

Monday 8<sup>th</sup> April  
Y5 Swimming  
PTFA Easter Bingo 3.30 pm – 4.30 pm  
(School Hall)

Wednesday 10<sup>th</sup>  
EYFS Easter Bonnet Parade 2.30 pm

Thursday 11<sup>th</sup>  
Live Music Concert (children only) 9.10 am

Friday 12<sup>th</sup>  
KS1 Easter Bonnet 9.10 am

School Closes for Easter @ 3.30pm

### Headteacher's Award

Friday 22<sup>nd</sup> March 2019

GC Elder  
**Jayda G**

CE Chestnut  
**William B**

DB Birch  
**Ruby H**

CW Maple  
**Jan K**

SR Hazel  
**Charlotte B**

LSM Rowan  
**Stanley S**

LST Hawthorn  
**Gabriella M**

SH Beech  
**Daisy F-B**

ELP Holly  
**Keeley G**

JT Ash  
**Mason H**

RN Sycamore  
**Xander L**

### Class of the Week

11<sup>th</sup> – 15<sup>th</sup> March 2019

Mr Birch's Class – 99.67%

(Whole school attendance for the week: 96.57%)

(Whole School current attendance: 96.49%)

(Target 97%)

### EXTRA CURRICULA ACTIVITIES

	Lunchtime	Afterschool
Monday		Y1/2 Multi Skills (6 of 9)
Tuesday	Cross Country	
Wednesday	Football	
Thursday	Netball Singing club 5/6	Singing Club 3.30 pm - 4.15 pm Library – 3.30 pm – 4.00 pm KS2 Table Tennis (6 of 9)
Friday	Singing Club Cross Country	Library Y3/4 3.30 pm – 4.00 pm

### Notice to Parents/Carers

Please note final Inset Day has been set:

**FRIDAY 24<sup>th</sup> MAY 2019**

School will be closed to pupils



# Info sheet

Sustrans Big Pedal is the UK's largest inter-school cycling, walking and scooting challenge that inspires pupils, staff and parents to choose 'human power' for their journey to school.

Lead sponsor

m-ero

Supporting sponsor

tonik

## The 2019 challenge

Travel around the body, learning, exploring and getting active for Sustrans Big Pedal. For the first time, **walking will be counted** alongside cycling and scooting.

This year the challenge will run from **25 March - 5 April**. Register for the challenge from January 2019 at [www.bigpedal.org.uk](http://www.bigpedal.org.uk).

86%

of participating schools surveyed said it raised awareness of cycling and scooting in their school

82%

of schools surveyed said that pupils continued to cycle or scoot to school following the event

## How it works

On each day of the challenge schools compete to see who can record the greatest number of pupils, staff and parents cycling, walking, scooting or using a wheelchair to school.

A school's best five days will determine their final position and schools at the top of their leaderboards will receive an exclusive Sustrans Big Pedal Trophy.

## 2018 was an amazing year

A staggering **1,179 kg of nitrogen oxide was avoided** as a result of the 10-day challenge. Almost **46 million calories were burned** from participants cycling and scooting to school.

If the journeys logged had been made by car, we saved over 576 tonnes of CO<sub>2</sub> and over 60,000 gallons of fuel, costing over £330,000.

In 2018, over

1,200

schools made

989,414

journeys to school by bike and scooter

Sustrans is the charity making it easier for people to walk and cycle.

We connect people and places, create livable neighbourhoods, transform the school run and deliver a happier, healthier commute. Join us on our journey. [www.sustrans.org.uk](http://www.sustrans.org.uk)

Sustrans is a registered charity no. 202807 (England and Wales) SC032862 (Scotland) © Sustrans January 2019

sustrans  
100% FUEL EFFICIENT

**Holiday fun 2019**  
**Cricket Camp**  
**Tamworth CC**  
**April 23rd - 3 days Cricket camp**

Jason Jakeman

Tamworth CC members get 10% off, on proof at time of booking

\* For 3 day camps there will be an option to extend to a week based on demand \*

Fully Qualified ECB COACH - All Coaches Qualified  
 Over 10 years of coaching experience  
 Coaches association member  
 Paediatric First Aider  
 Played 2XI Cricket for Northants  
 All Coaching Staff are DBS checked  
 Camps run through the school holidays - see dates  
 Camps at RUGBY CRICKET CLUB, WILLOUGHBY & TAMWORTH CRICKET CLUB

Cricket

5-17 year olds  
 9.30 a.m. - 3.30 p.m.  
 £60 for 3 days  
 or £25 per day  
 (£100 for the week)

Bring packed lunch and drinks and wear layers as it is outdoors

07776 256625  
 JASON\_JAKEMAN89@HOTMAIL.COM  
 \*Ts & Cs apply

www.katiecarrdesign.com

Tamworth CC  
 Hints Lane  
 Tamworth  
 B78 3AT

Procedures for inclement weather

In extreme cases we may have no alternative than to close school, or part close the school as a result of inclement weather. In such an event notification will be available through a number of sources, however our most efficient would be to use our facility to send texts and emails to you (please ensure we have your up-to-date email and mobile number).

Other notifications will include:

- local radio stations
- Staffordshire school closure website  
<http://www.staffordshire.gov.uk/education/schoolsandcolleges/emergencyclosures/schoolclosurelist/schoolclosurelist.aspx>
- **You may also wish to sign up for alerts:** [Sign up for school closure alerts](#) via text message and email, to be kept informed if our school is closed. This is a simple procedure where you just need to register your details to trigger a notification.

School website [www.cotongreenprimary.com](http://www.cotongreenprimary.com)

**REMINDER**  
**Chasewater Residential**

Instalment dates:

Deposit: Friday 1<sup>st</sup> March – £36.00 now overdue

Friday: 29 <sup>th</sup> March	£36.00/£19.00 PP
Friday: 3 <sup>rd</sup> May	£36.00/£19.00 PP
Friday: 24 <sup>th</sup> May	£36.00/£19.00 PP
Friday: 21 <sup>st</sup> June	£36.00/£19.00 PP

Details are on Parentpay.

**Red Nose Day**

**School donations final figure raised**  
**£252.20.**

**Well done everyone for your kind**  
**donations.**

# Coton Green Primary School – School Terms and Holiday Dates 2018/2019

## Autumn Term 2018

**Staff:** Monday 3 September **Inset Day:1**

**Pupils:** Tuesday 4 September

**Staff:** Friday 26<sup>th</sup> October **Inset Day: 2**

**Holiday:** Monday 29 October - Friday 2 November

**Staff:** Monday 5<sup>th</sup> November **Inset Day: 3**

**Term ends:** Friday 21 December

**Holiday:** Monday 24 December - Friday 4 January

## Spring Term 2019

**Term starts:** Monday 7 January

**Half term:** Monday 18 February - Friday 22 February

**Term ends:** Friday 12 April

**Holiday:** Monday 15 April - Friday 26 April

**Easter Sunday:** Sunday 21 April

## Summer Term 2019

**Term starts:** Monday 29 April

**May Day:** Monday 6 May

**Staff:** Friday 24<sup>th</sup> May **Inset Day: 5**

**Half term:** Monday 27 May - Friday 31 May

**Term ends:** Monday 22 July **Inset Day: 4**

**Holiday:** Tuesday 23 July - Friday 30 August

Staff Total: 195 days Pupil Total: (pupils are required to attend for 190 days)

(Monday 3<sup>rd</sup> September 2018 is already fixed as an Inset day and the other four days are to be identified by schools. Coton Green Primary have worked with other schools to try and align our Inset days where possible).

## **Coton Green Kids' Zone**

### Breakfast Club

Runs from 8.00 am – 8.45 am

Please be aware food cannot not be prepared after 8.30 am.

*Thank you for your co-operation*

## **Coton Green Kids' Zone**

### **Monday to Friday**

**8.00 am – 8.45 am and 3.30 pm – 5.30 pm**

**If you wish to arrange a long term booking in advance, please see the Kids' Zone team**

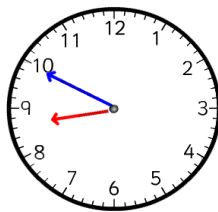
❖	Breakfast Club	£3.25 per day
❖	After School Club	£7.00 per day
❖	Both (wrap around care)	£10.00 per day
❖	Sibling rate for wrap around care	£9.00 per day

Please complete the booking form and send in to the school office or direct to the Kids' Zone club the week before to avoid disappointment.

Payment via ParentPay please.

*Booking forms are available from either the school office or Kids' Zone team*

## **NOTICE FOR PARENTS / CARERS**



**School punctuality is important and we would like to thank parents for their commitment in ensuring children arrive in good time for the 8:50 early work opening.**

**Please also be aware that children who are on site are the responsibility of parents and carers until handover at the classroom doors at 8:50.**

**During this time, it is important that children uphold the same high standards of behaviour as they do during school time.**

**We thank you in advance for your co-operation in this matter.**

### Food Allergies

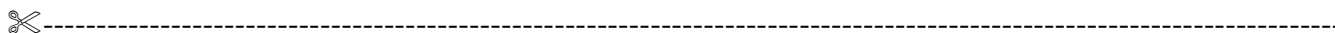
If your child has a food allergy, please collect a 'Chartwells Special Diet Request Form' from the school office.

#### Morning Break Sales

Toast	20p	American Pancakes	35p
Cheese on Toast	50p	Jam on Toast	30p
Tea Cake	35p	Half Bagel (toasted)	30p
Half Cheese Bagel	45p	Oatcake with Cheese	60p
Fruit Pot	30p	Crumpet with honey	30p
Veggie Sticks	25p		
*****			
500ml Water	35p	Fresh Milk	20p
Flavoured Milk	60p	Orange/Apple Shot 85ml	30p
Fruit Juice Beaker 150ml	35p	Hot Chocolate	50p

Please complete your menu choice for the week on a Monday morning to avoid disappointment.

*Thank you*



Week Commencing 25 <sup>th</sup> March 2019			Week 3	
Child's Name:			Class:	
<i>Monday</i>	Mozzarella & Tomato Pizza with Jacket Wedges Green Beans, Sweetcorn Fresh seasonal Salad Bar	(v) Baked Bean & Cheese Wrap Green Beans, Sweetcorn Fresh seasonal Salad Bar	Jacket Potato with a choice of filling	Choice of Assorted Sandwiches
<i>Tuesday</i>	Pork Sausages with Creamy Mashed Potato, Broccoli, Sweetcorn Fresh Seasonal Salad Bar	(V) Vegetable Lasagne Broccoli, Sweetcorn Fresh seasonal Salad Bar	Jacket Potato with a choice of filling	Choice of Assorted Sandwiches
<i>Wednesday</i>	Roast Turkey with Roast Potatoes & Gravy Seasonal Cabbage, Carrot Batons Fresh Seasonal Salad Bar	(v) Quorn Roast with Roast Potatoes & Gravy Seasonal Cabbage, Carrot Batons Fresh seasonal Salad Bar	Jacket Potato with a choice of filling	Choice of Assorted Sandwiches
<i>Thursday</i>	Beef Lasagne with Garlic and Herb Bread Wedge. Roasted Vegetables Fresh Seasonal Salad Bar	(v) Vegetable Korma with Rice Roasted Vegetables Fresh seasonal Salad Bar	Jacket Potato with a choice of filling	Choice of Assorted Sandwiches
<i>Friday</i>	Golden Cod Fish Fingers or Crispy Salmon Filet Fish Fingers with Chips Peas, Carrots, and Baked Beans Fresh Seasonal Salad Bar	(v) Quorn Sausage & Tomato Pasta Bake, Carrot Batons, Peas and Baked Beans Fresh seasonal Salad Bar	Jacket Potato with a choice of filling	Choice of Assorted Sandwiches
Subject to availability				