

## 18th November 2019

### Headteacher's Award

Friday 15<sup>th</sup> November 2019

DB Birch Emily K	CW Maple Ben H	AH/RT Hazel Stanley C
EP Rowan Stanley S	LSM Hawthorn Allexy E	SH Beech
LST Holly Isabelle S	JT ASH Jack H	RN Sycamore Ben N

### Class of the Week

4<sup>th</sup> – 8<sup>th</sup> November 2019



Miss Coton Class - 100 %

(Whole school attendance for the week: 96.63%)

(Whole School current attendance: 96.88%)

### Children in Need

Total collected: £253.39

Thank you to all who contributed

Everyone looked fabulous and spotty!

### EXTRA CURRICULA ACTIVITIES

	Lunchtime	Afterschool
Monday		Aston Villa Football 3.30 - 4.30 pm (2 of 7)
Tuesday		
Wednesday		
Thursday		Library EYFS / Y1 / Y2 3.30 pm – 4.00 pm Sing Up Club KS2 3.30 pm – 4.15 pm
Friday		Library Y3 /4 /5 /6 3.30 pm – 4.00 pm

### Upcoming Dates

#### NOVEMBER

#### Monday 18th

Y4 Swimming

#### Tuesday 19<sup>th</sup>

Open Evening 5.00 – 6.00 pm  
Reception (Sept 2020)

#### DECEMBER

#### Monday 2<sup>nd</sup> December

Y4 Swimming  
Y5/6 Astronaut Training Day

#### Wednesday 4<sup>th</sup>

PTFA – NON-UNIFORM DAY  
(Bring an item for the Christmas Fayre)

#### Friday 6<sup>th</sup>

3.40 pm Christmas Fayre

#### Wednesday 11<sup>th</sup>

Flu Vaccinations in school  
Y1/2 Trip  
(Y1/2 vaccines in the afternoon)

#### Thursday 12<sup>th</sup>

EYFS Christmas Performance  
2.30 pm  
(School hall)

#### Tuesday 17<sup>th</sup>

KS2 Christmas Performance  
2.00 pm and 4.00 pm  
(The Coton Centre)

#### Wednesday 18<sup>th</sup>

KS1 Christmas Performance  
2.00 pm and 4.00 pm  
(School hall)

#### 20<sup>th</sup> December

School Closes for Christmas



w/c Monday 18<sup>th</sup> November

### Swimming Year 4

Please do not forget your swimming kit!

## PTFA

The school discos raised an amazing £528.20 - a huge thank you to everyone for your continued support

Non-Uniform Day - Wednesday 4<sup>th</sup> December

Please bring any of the following to support our Christmas Fayre.

EYFS – Biscuits

Year 1 and Year 2 – Chocolate

Year 3 and Year 4 – Bottle

Year 5 Year 6 – Bottle

We would also be grateful for donation raffle prizes, good quality books, teddies (can be brought in from Wednesday 5<sup>th</sup> December)

Cakes for the cake stall (to be brought in on the day on the fayre)



At this time of year, it's important to **Be Bright and Be Seen** when you are out and about near roads.

**BE BRIGHT** – wear fluorescent or brightly coloured clothing when walking to and from school – it shows up well in daylight and at dusk.

**REFLECTIVE** – When it's dark outside, wear reflective clothing to be seen in car headlights. Reflective vests, sashes or wristbands work well.

**IMPROVE** – improve your visibility with accessories, clip on reflectors, armbands and stickers added to your coat or bag are a great way to improve your visibility.

**GREEN CROSS CODE** – always choose routes and crossing places that are well lit and remember to use the Green Cross Code.

**HEADLIGHTS** – if you like to cycle, it's the law to have clean and working headlights on your bike at night (white at the front, red at the back) as well as a rear reflector. It's good to fit spoke reflectors too.

Coton Green Primary School  
Kipling Rise  
Coton Green  
Tamworth B79 8LX

Tele: 01827 337456  
www.cotongreenprimary.com

# Open Evening

Tuesday 19<sup>th</sup> November 2019

5.00 pm – 6.00 pm

We look forward to welcoming all children born  
between 1<sup>st</sup> September 2015 and 31<sup>st</sup> August 2016  
due to start school September 2020



**ALDI'S  
KIT  
FOR SCHOOLS**

Get together | Get collecting | Get active

We're collecting  
Team GB stickers with  
Aldi's Kit for Schools.

Help us collect 300 stickers to complete  
our poster and we'll receive an exclusive  
sports kit plus a chance to win  
**£20,000!**

Find out more and get stuck in at  
[getseteatfresh.co.uk/kitforschools](http://getseteatfresh.co.uk/kitforschools)

TEAM GB  
GETSET  
eat to fresh  
ALDI

T&Cs apply

## REMINDER

Aston Villa Football KS2  
Monday 3.30 pm - 4.30 pm

Ronan is back!  
We still have places available. If your child  
is interested, please collect a consent  
form from the school office.

## News from Y3/4

### DT Project

As part of our DT project we are in  
need of Shoe Boxes – please send to  
any of the Y3/4 classes

## Y1/2

Please could the parents of children in Year  
1/2 send their child in with a red bow!



Thank you for your cooperation

## News from Y5/6

### Astronaut Training Day

2<sup>nd</sup> December

Please make an astronaut outfit to  
wear on the day

**Coton Green Kids' Zone**

**Monday to Friday**

**8.00 am – 8.45 am and 3.30 pm – 5.30 pm**

**If you wish to arrange a long term booking in advance, please call in to the school office**

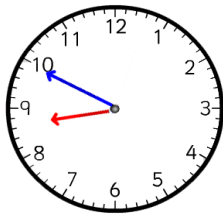
- ❖ Breakfast Club £3.25 per day
- ❖ After School Club £7.00 per day
- ❖ Both (wrap around care) £10.00 per day
- ❖ Sibling rate for wrap around care £9.00 per day

**Please complete the booking form and send in to the school office the week before do avoid disappointment.**

Payment via ParentPay please.

*Booking forms are available from either the school office or Play Leader*

**NOTICE FOR PARENTS /  
CARERS**



**School is open to pupils from 8.50am for early work.**

**We cannot be held responsible for children being left unsupervised on the playground before this time.**

**Pupils are expected to be in class by 8.50am so they can start their learning briskly. Register is taken at 9.00am prompt.**

**REMINDER**

It is school policy that dogs are not allowed on school premises at any time. This includes leaving dogs unattended at school entrances.

The safety of all in our learning family is our number one priority. Thank you for your co-operation in this matter.

**REMINDER**

If your child has sickness and / or diarrhoea, school policy is that your child should not return to school until 48 hours from the last symptom.

*Thank you for your co-operation.*

**Car Parking**

We have had some complaints from our neighbours about inconsiderate car parking. We politely ask that when you drop your child off in the mornings and collect at the end of the day that you do not obstruct drive ways or footpaths.

Thank you

**Reminder**

**PARENTPAY**

Please activate your account asap if not already done so.

Any problems please speak with the school office.

Thank you

# **Coton Green Primary School – School Terms and Holiday Dates 2019/2020**

## **Autumn Term 2019**

**Inset Day 1:** Monday 2 September      **(Staff Only)**

**Inset Day 2:** Tuesday 3 September      **(Staff Only)**

**Term Starts:** Wednesday 4<sup>th</sup> September

**Inset Day 3:** Friday 25<sup>th</sup> October      **(Staff Only)**

**Holiday:** Monday 28 October - Friday 1 November

**Term ends:** Friday 20 December

**Holiday:** Monday 23 December - Friday 3 January

## **Spring Term 2020**

**Inset Day 4:** Monday 6 January      **(Staff Only)**

**Term Starts:** Tuesday 7<sup>th</sup> January

**Half term:** Monday 17 February - Friday 21 February

**Term ends:** Friday 3 April

**Holiday:** Monday 6 April - Friday 17 April

**Easter Sunday:** Sunday 12 April

## **Summer Term 2020**

**Term starts:** Monday 20 April

**May Day:** Friday 8<sup>th</sup> May

**Half term:** Monday 25 May - Friday 29 May

**Inset Day 5:** Monday 20<sup>th</sup> July      **(Staff Only)**

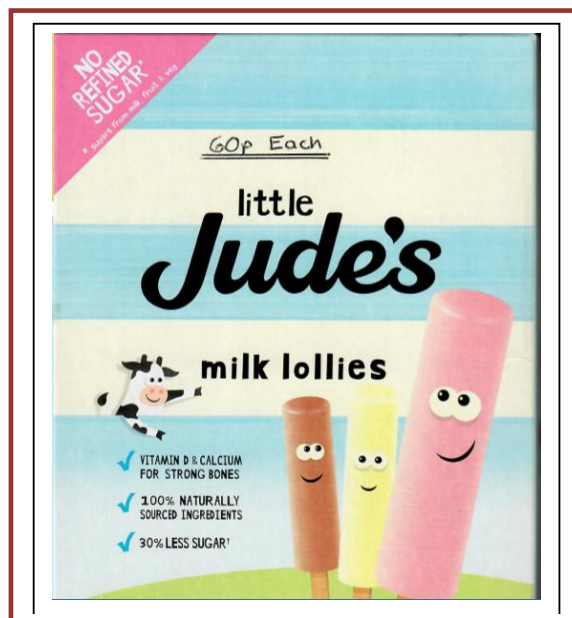
**Holiday:** Tuesday 21 July - Monday 31 August

Staff Total: 195 days Pupil Total: (pupils are required to attend for 190 days)

(Monday 2<sup>nd</sup> September 2019 is already fixed as an Inset day and the other four days are to be identified by schools. Coton Green Primary have worked with other schools to try to align our Inset days where possible)

### Morning Break Sales

Cheese on Toast	60p	Jam on Toast	35p
Tea Cake	35p	Half Bagel (toasted)	30p
Half Cheese Bagel	45p	Oatcake with Cheese	60p
Fruit Pot/Veggie Pot	35p	Crumpet	35p
Veggie Sticks	35p	Scotch Pancakes	35p
Small Water	30p	Fresh Milk	25p
Flavoured Milk	60p	Orange Shot 85ml	40p
Orange & Apple Juice	35p	Hot Chocolate	50p
	30p	Veggie Stick	30p



### Lunch Reminder

Please complete your menu choice for the week on a Monday morning to avoid disappointment.

**\*\* Please note we are now following the Autumn / Winter Menu 2019/2020 \*\***



Week Commencing <b>Monday 18<sup>th</sup> November 2019</b>			<b>Week 3</b>	
			Class:	
<i>Monday</i>	Cheese and Tomato Pizza with Potato Wedges, Carrots and Peas Fresh seasonal Salad Bar.	(v) Cheesy Onion Quiche with Potato Wedges, Carrots and Peas Fresh seasonal Salad Bar.	Jacket Potato with a choice of filling	Choice of Assorted Sandwiches
<i>Tuesday</i>	Pork Sausages with Mashed Potato and Gravy, Sweetcorn and Green Beans. Fresh Seasonal Salad Bar.	(V) Quorn Sausage With Mashed Potato and Gravy, Sweetcorn and Green Beans. Fresh Seasonal Salad Bar	Jacket Potato with a choice of filling	Choice of Assorted Sandwiches
<i>Wednesday</i>	Traditional Roast Chicken with Roast Potatoes & Gravy, Cabbage, Carrots. Fresh Seasonal Salad Bar	(v) Giant Vegetable Pasty With Roast Potatoes and Gravy, Cabbage and Carrots Fresh Seasonal Salad Bar	Jacket Potato with a choice of filling	Choice of Assorted Sandwiches
<i>Thursday</i>	Beef Bolognese With Wholemeal Pasta, Broccoli and Mediterranean Vegetables Fresh Seasonal Salad Bar	(v) Quorn Paella With Broccoli and Mediterranean Vegetables Fresh Seasonal Salad Bar	Jacket Potato with a choice of filling	Choice of Assorted Sandwiches
<i>Friday</i>	Cod Fillet Fish Fingers & Chips Peas, Carrots & Baked Beans Fresh Seasonal Salad Bar	(v) Baked Bean Omelette With Chips, Peas Carrots and Baked Beans Fresh seasonal Salad Bar	Jacket Potato with a choice of filling	Choice of Assorted Sandwiches
Subject to availability				