

## 29th March 2018

### Easter Half-Term



School will close today Thursday 29<sup>th</sup> March @ 3.30 pm  
School will re-open to children on Monday 16<sup>th</sup> April @ 8.50 am  
(Thursday 12<sup>th</sup> and Friday 13<sup>th</sup> April – INSET Days)



Dear Parents / Carers

What a busy term this has been. I would like to start by thanking the school community for their support and understanding around the school closure we had because of the recent snow and ice. It is always a difficult decision to close the school and apologise for any inconvenience caused. Much thanks must also go to Mr Brookes who has worked tirelessly to ensure paths are cleared in difficult circumstances. He really is one of school's unsung heroes – often coming to school much earlier than his official time to ensure school is safe for all.

Thank you Mr Brookes!

We have had our traditional Easter Bonnet Parades this week and it was so lovely to see so many of you enjoying the parades in school. The children obviously enjoyed making their bonnets and showing them off during the parade. I am so impressed with the children's confidence with such a packed-out hall. I was also impressed with the fantastic egg designs with a book theme in KS2. Well done to all who took part.

Our charity and PTFA events have also been a huge success recently. For Sport Relief, all children (and most adults) ran the Sport Relief Mile. Now running is not one of my favourite things, but I joined in with the children. I was amazed at the speed and fitness many of our children displayed and the determination of all to complete the mile. Much credit should go to Mr Parker for his work on the children's fitness in PE lessons leading up to the event and his organisation of the event itself. It was a really well-organised event and more importantly, one which the children enjoyed. The Coton Green Learning Family should be extremely proud of their efforts and I am pleased to report we raised a fantastic total of £2077.70.

Our PTFA bingo night was once again very popular with over 100 people in the hall, all with their eyes down and pens ready to react to the numbers being called by our amazing bingo callers, Scarlett and Kieran. The number of eggs donated by the school community in the previous non-uniform day was astounding and made for great prizes. I would like to thank the PTFA, Mrs Pursehouse and all who attended making the event so successful.

The PTFA continue to do great work in supporting our school in times when school budgets are under stress. This enables us to buy equipment that enhances the every-day lives of children in school. I cannot thank you enough for supporting the school so well.

You will have seen the new entrance area taking shape and good progress is being made with the build. I would like to thank you all for your patience at this time and using alternative exits for after-school club pick-ups and patience when waiting at our temporary reception entrance. I'm sure it will be worth the inconvenience when we have our new reconfigured reception area.

I am also aware of the local building developments and note that road closures and temporary traffic lights will bring disruption in the coming months. Hopefully the weather will improve and will enable more of the school community to join in with our walk to school initiatives as part of the STARS programme and enable children to be in school at 8:50 ready for their learning. To help with timings the 10-minute walk zone is included in this newsletter.

All that remains for me to do is to wish you all a happy Easter break, stay safe and come back refreshed for another busy but exciting term of learning.

Mr R Osborne



Class of the Week  
19<sup>th</sup> – 23<sup>rd</sup> March 2018

**Miss Stevenson – 100%**

(Whole School Attendance for the week: 96.88%)  
(Current Whole School Attendance: 96.45%)



**MONDAY 16<sup>th</sup> April**

Swimming Starts

**SWIMMING – Y5**

*Please do not forget your swimming kit!*



Monday Y3 Violins

**Please do not forget your violin!**

Extra-Curricular Clubs

REMINDER

Can parents please use KS1 and KS2 playground entrances when collecting their children, as previously advised.

**Thank you**

Upcoming Dates

Monday 16<sup>th</sup> April

School re-opens to children @ 8.50am  
(Thursday 12<sup>th</sup>/Friday 13<sup>th</sup> INSET DAYS)

Swimming Starts – Y5

Wednesday 18<sup>th</sup> April  
Aston Villa - KS1 (1 of 6)

Tuesday 24<sup>th</sup> April  
Film Night

Thursday 26<sup>th</sup> April  
Film Night

Tuesday 22<sup>nd</sup> May  
Y5 Gifted & Talented

Wednesday 23<sup>rd</sup> May  
PTFA School Disco

Friday 25<sup>th</sup> May  
School Closes for ½-term

Monday 4<sup>th</sup> June  
School re-opens

Wednesday 20<sup>th</sup> June  
PTFA Ladies Night

Wednesday 27<sup>th</sup> – Friday 29<sup>th</sup> June  
QEMS Induction

Friday 6<sup>th</sup> July  
PTFA Summer Fayre

**EXTRA CURRICULA ACTIVITIES**

	Lunchtime	Afterschool
Monday	Netball Club Y5/6	
Tuesday	Netball Club	
Wednesday	Running Club KS2 / Netball Club	Aston Villa Football – KS1 (1 of 6)
Thursday		Library Club 3.30 pm – 4.00 pm
Friday		

## Easter Bonnet Parade Winners



### EYFS

Miss Coton's Class: Ben H / Lila D-T

Mrs Evans' Class: Logan B / Sophie H

### KS1

Mr Birch's Class: Morgan D / Joey B / Louie G / Freya H / Amelia R / Caitlyn P

Mrs Holbrook's Class: Thomas D / Noah M / Daniel D / Eva J / Isabel H / Lottie Mai C

Mrs Humphrey's Class: Harry R / Dexter Q / Nicholas G / Phoebe T / Abbey N / Ruby H

### KS2 'An Eggcellent Read' Egg Competition

Mrs Smith's Class: Alycia B / Daniel S

Mr Newton's Class: Lilly M / Dylan D

Miss Stevenson's Class: Miley J / Jamie E-B

Mrs Tanner's Class: Scarlet H / James C

Miss Wesley's Class: Aaliyah H / Theo A

Mrs Thomas' Class: Katie-Jo B / Tyler J



EYFS – Daisy-Leigh S

### Poster Winners

KS1 – Ella-Mai W

KS2 – Cydney M

### Hooked on Books Winners

Layla G

Zane T

Harry C

### Science Competition Winners

EYFS Lara H

KS1 Esme W

Y3/4 Lily-Ann M

Y5/6 Scarlet H

(5 to go through to National Final, including Jamie E-B)

### Runners Up – Easter Eggs

Jamie E-B

Callum A

Harry C

Freya H

Lola H

Maisy B-S

Lucy T

## Coton Green Primary School – School Terms and Holiday Dates 2018/2019

### Autumn Term 2018

**Staff:** Monday 3 September **Inset Day:1**

**Pupils:** Tuesday 4 September

**Staff:** Friday 26<sup>th</sup> October **Inset Day: 2**

**Holiday:** Monday 29 October - Friday 2 November

**Staff:** Monday 5<sup>th</sup> November **Inset Day: 3**

**Term ends:** Friday 21 December

**Holiday:** Monday 24 December - Friday 4 January

### Spring Term 2019

**Term starts:** Monday 7 January

**Half term:** Monday 18 February - Friday 22 February

**Term ends:** Friday 12 April

**Holiday:** Monday 15 April - Friday 26 April

**Easter Sunday:** Sunday 21 April

### Summer Term 2019

**Term starts:** Monday 29 April

**May Day:** Monday 6 May

**Half term:** Monday 27 May - Friday 31 May

**Term ends:** Monday 22 July **Inset Day: 4**

**Holiday:** Tuesday 23 July - Friday 30 August

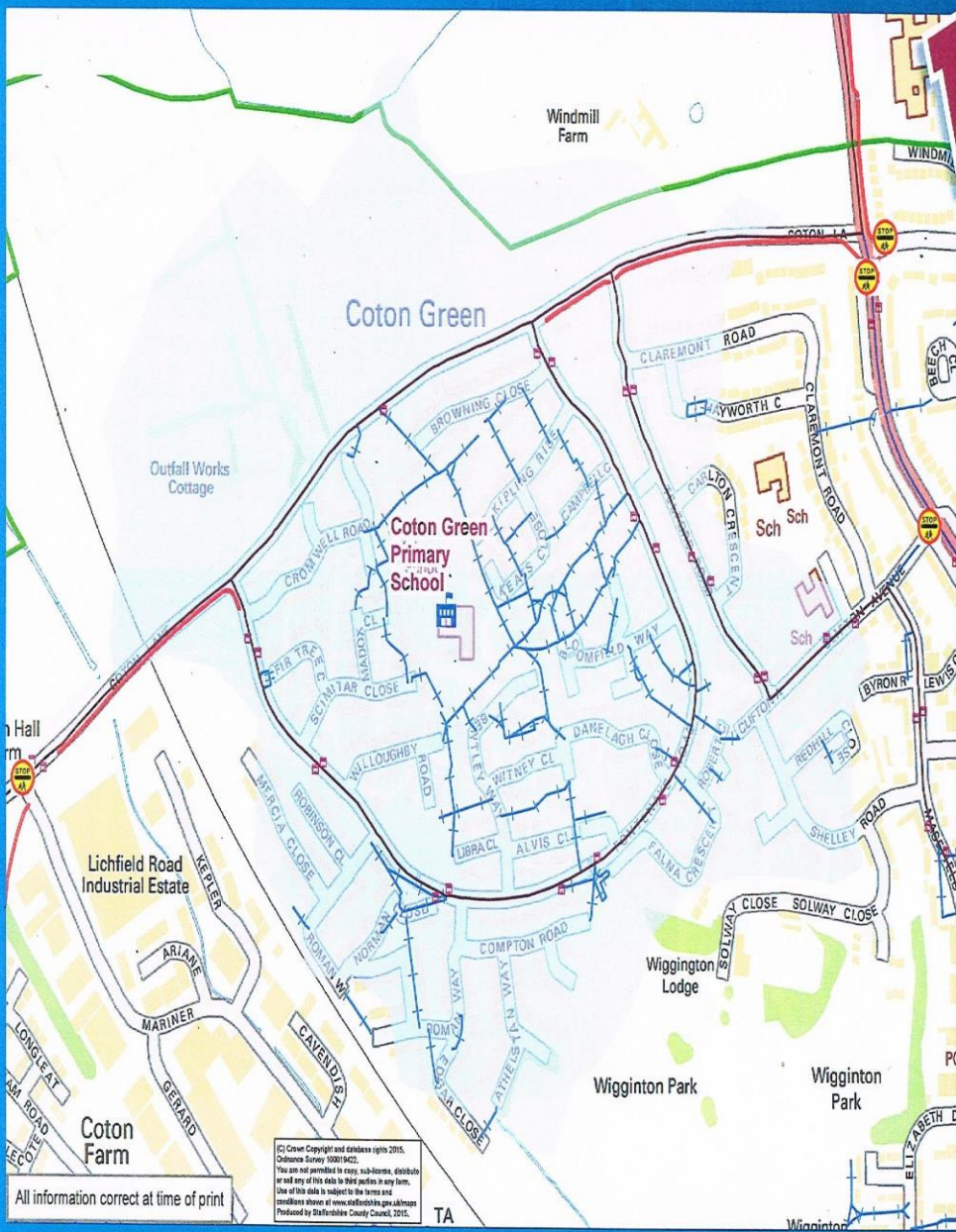
**There is 1 other Inset day to be confirmed.**

Staff Total: 195 days Pupil Total: (pupils are required to attend for 190 days)

(Monday 3<sup>rd</sup> September 2018 is already fixed as an Inset day and the other four days are to be identified by schools. Coton Green Primary have worked with other school to try and align our Inset days where possible.)

# Travelling to Coton Green Primary School

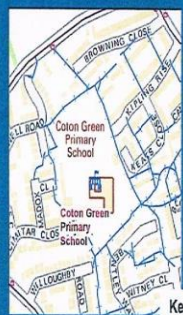
**10 Minute Walk Zone**



If you live inside the 10 Minute Zone, you could walk to and from school every day. Even if you need a car to travel to work, it may be quicker and easier to leave it parked at home while you do the school run.

If you live just outside the Zone, try walking – it could be quicker than you think!

If you have to travel by car to school, please try to park outside the walking zone, with care and consideration for local residents, and walk the rest of the way.



- Key**
- 10 minute walking time to school
  - Bus Stops
  - Bus Routes
    - Hourly or better
    - Less Frequent
  - Cycle Routes
  - School Crossing Patrol
  - Footways

All information correct at time of print

(C) Crown Copyright and database rights 2015. Ordnance Survey 100019422. You are not permitted to copy, sub-license, distribute or sell any of this data to third parties in any form. Use of this data is subject to the terms and conditions shown at [www.ordnancesurvey.gov.uk/terms](http://www.ordnancesurvey.gov.uk/terms) Produced by Staffordshire County Council, 2015.

**Staffordshire STARS Get active, get moving, get involved**

From w/c 16/04/2018 – Price Increase

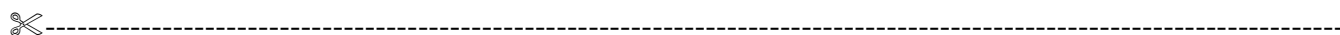
Morning Break Sales

Toast	30p	Veggie Stick	30p
Cheese on Toast	60p	Jam on Toast	35p
Tea Cake	35p	Half Bagel (toasted)	30p
Half Cheese Bagel	45p	Oatcake with Cheese	60p
Fruit Pot/Veggie Pot	35p	Crumpet	35p
Small Water	30p	Flavoured Milk	60p
Orange Shot 85ml	40p	Tropicana 150ml	35p
Hot Chocolate	50p	Milk Drink	25p

Lunch Reminder

Please complete your menu choice for the week on a Monday morning to avoid disappointment.

Please note: The new summer menu will begin w/c 23<sup>rd</sup> April



Week Commencing 16 <sup>th</sup> April 2018				Week 2
Child's Name:				Class:
<i>Monday</i>	Macaroni Cheese with Broccoli & Carrots	(v) Veggie Balls in Tomato Sauce with Broccoli and Carrots	Jacket Potato with a choice of filling	Assorted Sandwiches
<i>Tuesday</i>	Pork Sausages with Creamy Mash, gravy, Sweetcorn & Seasonal Cabbage	(v) Vegetarian Sausage with Creamy Mash, Sweetcorn & Seasonal Cabbage	Jacket Potato with a choice of filling	Assorted Sandwiches
<i>Wednesday</i>	Roast Chicken with Roast Potatoes, Gravy, Peas & Swede	(v) Quorn Roast with Roast Potatoes, Gravy, Peas & Swede	Jacket Potato with a choice of filling	Assorted Sandwiches
<i>Thursday</i>	Mild Beef Chilli with Rice, Sweetcorn & Green Beans	(v) Crunchy Topped Italian Bake with Rice, Sweetcorn & Green Beans	Jacket Potato with a choice of filling	Assorted Sandwiches
<i>Friday</i>	Golden Fish fingers & Chips, Baked Beans, Carrots, Peas	(v) Quorn Burger & Chips, Baked Beans, Carrots & Peas	Jacket Potato with a choice of filling	Assorted Sandwiches
Subject to availability				