




3rd December 2018

 **Headteacher's Award** 

Friday 30th November 2018

GC Elder	CE Chestnut	
	Samuel J	
DB Birch	CW Maple	SR Hazel
Archie R	Rosie C	Archie G
LSM Rowan	LST Hawthorn	SH Beech
Isaac S	Jake M	Theo V
ELP Holly	JT Ash	RN Sycamore
Katie- Jo B	Alfie R	

 **Class of the Week**

19th – 23rd November 2018

Mrs Tanner's Class – 98.62%

(Whole school attendance for the week: 96.62%)

(Whole School current attendance: 96.93%)

(Target 97%)

Upcoming

DECEMBER

Monday 3rd
Y4 Swimming
School Immunisations YR-Y5

Wednesday 5th
PTFA Non-Uniform

Friday 7th
Headteacher's Award Assembly
3.30 pm PTFA Christmas Fayre

Monday 10th
Swimming Ends

Wednesday 12th
2.30 pm EYFS Christmas Performance

Friday 14th
Head Teacher's Award Assembly

Tuesday 18th
KS2 Christmas Performances

Wednesday 19th
Christmas lunch for children

Thursday 20th
2.00 pm and 4.00 pm KS1 Christmas Performances

Friday 21st
School Closes for Christmas

Monday 7th January
School opens for Spring term

EXTRA CURRICULA ACTIVITIES		
	Lunchtime	Afterschool
Monday		
Tuesday	Cross Country	AVFC KS2 (4 of 5)
Wednesday	Football	Dance (5 of 7) 3.30 pm – 4.30 pm
Thursday	Netball Singing Club Y5/6	Singing Club 3.30 pm - 4.15 pm Library – 3.30 pm – 4.00 pm
Friday	Singing Club Cross Country	

Year 1/2 Reminder

Could all children in year 1/2 bring a large orange to school on

Monday 3rd December

The children will be making a Christingle Candle during the day.

Many thanks Year 1/2

PTFA

Non-Uniform Day –Wednesday 5th December

Please bring any of the following to support our Christmas Fayre.

EYFS – Biscuits

Year 1 and Year 2 – Chocolate

Year 3 and Year 4 – Bottle

Year 5 Year 6 – Bottle

Also any raffle prizes, good quality books and teddies
(please bring in from Wednesday 5th)

Cakes for the cake stall
(to be brought in on the day of the fayre)

Coton Green Kids' Zone

Breakfast Club

Runs from 8.00 – 8.45

Please be aware food cannot not be prepared after 8.30am.

Thank you for your co-operation

REMINDER

It is school policy that dogs are not allowed on school premises at any time.

This includes leaving dogs unattended at school entrances.

The safety of all in our learning family is our number one priority.

Thank you for your continued co-operation.

Coton Green Kids' Zone

Monday to Friday

8.00 am – 8.45 am and 3.30 pm – 5.30 pm

If you wish to arrange a long term booking in advance, please see the Kids' Zone team

❖	Breakfast Club	£3.25 per day
❖	After School Club	£7.00 per day
❖	Both (wrap around care)	£10.00 per day
❖	Sibling rate for wrap around care	£9.00 per day

Please complete the booking form and send in to the school office or direct to the Kids' Zone club the week before to avoid disappointment.

Payment via ParentPay please.

Booking forms are available from either the school office or Kids' Zone team

NOTICE FOR PARENTS / CARERS

School punctuality is important and we would like to thank parents for their commitment in ensuring children arrive in good time for the 8:50 early work opening. This has markedly improved so far this year.

Please also be aware that children who are on site are the responsibility of parents and carers until handover at the classroom doors at 8:50.

During this time, it is important that children uphold the same high standards of behaviour as they do during school time.

We thank you in advance for your co-operation in this matter.



Coton Green Pre-School Nursery

STAY AND PLAY

Date & Times - Wednesdays 1:15pm - 2:45pm

Price - £1.50

Age - 0-4 years



**Craft and messy
play**

Snack time

Stories and songs

Make new friends

**Help your child
learn through play**

**COTON GREEN PRE-
SCHOOL NURSERY
(WITHIN THE
GROUNDS OF COTON
GREEN PRIMARY
SCHOOL)**

Kipling Rise
Coton Green
Tamworth
Staffordshire
B79 8LX

Tel: 01827 337464

www.cotongreennursery.co.uk

cotongreenpreschoolnursery@yaboo.co.uk

Coton Green Primary School – School Terms and Holiday Dates 2018/2019

Autumn Term 2018

Staff: Monday 3 September **Inset Day:1**

Pupils: Tuesday 4 September

Staff: Friday 26th October **Inset Day: 2**

Holiday: Monday 29 October - Friday 2 November

Staff: Monday 5th November **Inset Day: 3**

Term ends: Friday 21 December

Holiday: Monday 24 December - Friday 4 January

Spring Term 2019

Term starts: Monday 7 January

Half term: Monday 18 February - Friday 22 February

Term ends: Friday 12 April

Holiday: Monday 15 April - Friday 26 April

Easter Sunday: Sunday 21 April

Summer Term 2019

Term starts: Monday 29 April

May Day: Monday 6 May

Half term: Monday 27 May - Friday 31 May

Term ends: Monday 22 July **Inset Day: 4**

Holiday: Tuesday 23 July - Friday 30 August

There is 1 other Inset day to be confirmed.

Staff Total: 195 days Pupil Total: (pupils are required to attend for 190 days)

(Monday 3rd September 2018 is already fixed as an Inset day and the other four days are to be identified by schools. Coton Green Primary have worked with other schools to try and align our Inset days where possible).

Wednesday 19th December

Enjoy Sadie's...

£2.25 per child
EYFS & KS1
(Free as usual)

Festive Menu

Choose a Main Meal...

Roast Breast of Local Turkey
Quorn Roast
Pigs in Blankets
Sage & Onion Stuffing

On the Side...

Roast and Mashed Potatoes
Carrots, Peas
& Roast Parsnips

For Dessert...

Christmas Ice Cream
Sticky Toffee Pudding
with Custard
Christmas Crackers



Please contact your Catering Manager for
more information.


Chartwells
EAT LEARN LIVE

Food Allergies

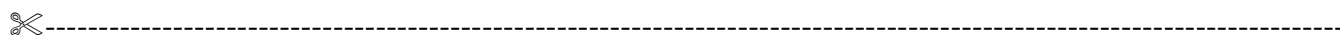
If your child has a food allergy, please collect a 'Chartwells Special Diet Request Form' from the school office.

Morning Break Sales

Toast	30p	Veggie Stick	30p
Cheese on Toast	60p	Jam on Toast	35p
Tea Cake	35p	Half Bagel (toasted)	30p
Half Cheese Bagel	45p	Oatcake with Cheese	60p
Fruit Pot/Veggie Pot	35p	Crumpet	35p
Veggie Sticks	35p	Scotch Pancakes	35p
Small Water	30p	Fresh Milk	25p
Flavoured Milk	60p	Orange Shot 85ml	40p
Orange & Apple Juice	35p	Hot Chocolate	50p

Please complete your menu choice for the week on a Monday morning to avoid disappointment.

Thank you



Week Commencing		3 rd December 2018		Week 2	
Child's Name:			Class:		
<i>Monday</i>	Mozzarella & Tomato Pizza With Pasta Salad Sweetcorn, Peas Fresh Seasonal Salad Bar	(v) Baked Bean & Cheese Wrap Sweetcorn, Peas Fresh Seasonal Salad Bar	Jacket Potato with a choice of filling	Choice of Assorted Sandwiches	
<i>Tuesday</i>	Chicken and Sweetcorn Pie with Creamy Mashed Potato, Roasted Vegetables Fresh Seasonal Salad Bar	(v) Vegetarian Sausages with Creamy Mashed Potato Roasted Vegetables Fresh	Jacket Potato with a choice of filling	Choice of Assorted Sandwiches	
<i>Wednesday</i>	Roast Pork with Roast Potatoes & Gravy, Broccoli, Carrot Batons, Fresh Seasonal Salad Bar	Cheese and Potato Bake with Roast Potatoes Broccoli, Carrot Batons, Fresh Seasonal Salad Bar	Jacket Potato with a choice of filling	Choice of Assorted Sandwiches	
<i>Thursday</i>	Beef Burger with Potato Wedges Green Beans, Sweetcorn Fresh Seasonal Salad Bar	(v) Vegetarian Tagine with Rice Green Beans, Sweetcorn Fresh Seasonal Salad Bar	Jacket Potato with a choice of filling	Choice of Assorted Sandwiches	
<i>Friday</i>	Golden Cod Fish Fillet Fingers & Chips, Peas Carrot Batons & Baked Beans Fresh Seasonal Salad Bar	(v) Quorn Burger with Chips Peas, Carrot Batons & Baked Beans Fresh Seasonal Salad Bar	Jacket Potato with a choice of filling	Choice of Assorted Sandwiches	
Subject to availability					