

## 3rd June 2019

School closes for half-term Thursday 23rd May @ 3.30 pm  
(Friday 24<sup>th</sup> May INSET for pupils)

\*\*\*

School reopens Monday 3<sup>rd</sup> June @ 8.50 am



### Class of the Week

13<sup>th</sup> - 17<sup>th</sup> May 2019

Miss Palser's Class – 100%

(Whole school attendance for the week: 95.91%)

(Whole School current attendance: 96.41 %)

(Target 97%)

### Reminder

#### **BIG SING Workshop – 28<sup>th</sup> June**

If you have ordered a ticket, please make payment via Parentpay no later than **Friday 7<sup>th</sup> June**.

\*\*\*\*\*

#### **K2M Concert – 2<sup>nd</sup> July**

Limited tickets available, if you have ordered a ticket please make payment via Parentpay no later than

**Monday 3<sup>rd</sup> June.**

*Thank you for your cooperation*

### Upcoming Dates

#### Friday 24<sup>th</sup> May

INSET - School closed to pupils

#### Monday 27<sup>th</sup> – Friday 31<sup>st</sup>

School Closed Half-Term

### JUNE

#### Monday 3<sup>rd</sup>

School opens @ 8.50 am

Top-Up Swimming

#### Tuesday 4<sup>th</sup>

School Photographs

(Class Groups, EYFS Graduations, Y6 Leavers and Sports/Music teams)

#### Monday 10<sup>th</sup>

5.00 pm in the school hall - Meeting for New Entrants – September 2019

#### Thursday 13<sup>th</sup>

Y5/6 BCU Visit

#### Monday 17<sup>th</sup>

Y6 Chasewater Day Visit

#### Wednesday 26<sup>th</sup> – Thursday 27<sup>th</sup>

New Entrants – Meet the Teacher

#### Wednesday 26<sup>th</sup> – Friday 28<sup>th</sup>

Y6 Rawlett Transition Days  
Y6 Landau QEMS Transition Days

#### Thursday 27<sup>th</sup>

School Discos

#### Friday 28<sup>th</sup>

Big Sing for Years 1/2/3

### JULY

#### Tuesday 2<sup>nd</sup>

K2M Concert Y3 & Y5

#### Friday 5<sup>th</sup>

PTFA Summer Fayre

#### Wednesday 10<sup>th</sup>

Summer Concert

### **EXTRA CURRICULA ACTIVITIES**

	Lunchtime	Afterschool
<b>Monday</b>		
<b>Tuesday</b>	Area Sports Practice	AVFC KS2 (4of 9)
<b>Wednesday</b>	Area Sports Practice	
<b>Thursday</b>	Area Sports Practice	Singing Club 3.30 pm – 4.15 pm Library – 3.30 pm – 4.00 pm KS2 Camera Club 3.30 pm – 4.15 pm
<b>Friday</b>	Singing Club Area Sports Practice	Library Y3/4 3.30 pm – 4.00 pm

# SCIENCE FAIR

## HOW DOES...?

We are excited to announce there will be a science fair held in our school on **Wednesday 3rd July**. The best entrants will go forward to represent Coton Green Primary School at the Rawlett science fair, along with other primary schools from the local area, on **Friday 12<sup>th</sup> July**.

You must let Miss Stevenson know if you will be participating in the Science fair by Friday 14<sup>th</sup> June.

You will need to be able to present your understanding of how something works e.g. How does a boat float? / How does an eye work? / How does a new day begin? (You decide!)

You can work and plan on your own or with a partner (**no more than 2 per group**). You must produce a visual display to accompany your experiment (including your names, age and year group) and you will need to be able to demonstrate (via video or photographs if it's messy or time consuming!) and explain the science behind your investigation to an audience - keep it simple.

You will gain extra credit for linking your demonstration/investigation/experiment to a scientist, especially if you can raise awareness of lesser known scientists.

For ideas you may wish to use books or web sites, such as

[www.sciencebob.com](http://www.sciencebob.com) and [www.sciencekids.co.nz](http://www.sciencekids.co.nz)

## Lunchtime Menu Orders

Please make sure all school meals are pre-ordered using the menu slips from the kitchen and newsletter.

This will make sure your child receives the meal of their choice and prevent waste in the kitchen.

### REMINDER Chasewater Residential

Instalment dates:

Friday: 24<sup>th</sup> May      £36.00/£19.00 PP

Friday: 21<sup>st</sup> June      £36.00/£19.00 PP

Details are on ParentPay.



**Toileting Advice**

**Immunisations Advice**

## Let's Get Ready for School Roadshow

**Date:** 26<sup>th</sup> June 1-3pm  
**Venue:** Families First, Basin Lane, Tamworth B77 2AH

**Routines & Behaviours**

**With Health Visitors and School Nurses**

**Healthy Eating & Activity**

**Speech and Language & Hearing concerns**

**Self care & Social Skills**

### Aston Villa Football Tuesday 3.30 pm – 4.30 pm

KS2

There are still places available!

Ronan Gilbert has been confirmed as the coach for these sessions.

If your child would like to come along, please collect a registration form from the school office.

**STREET FOOD**

**GIN & CARIBBEAN**

**HOPWAS**

**TASTES, TUNES**

**AND TENTS**

**FAMILY WEEKENDER**

**FATHERS DAY**  
SUN 16TH JUNE

**TOTALLY WIPED-OUT**

**BEST DAD**

HOSTED AT TAMWORTH CRICKET CLUB  
LOCATION 'OFF PLANTATION LANE, HOPWAS' B78 3AT

SAT 15TH & SUN 16TH  
JUNE 2019

**LIVE MUSIC**

THE SKA'S45 BAND    MATILDA PRATT    SAT 15TH

JUDE BRITTON    SHEENA VULTAGGIO    SUN 16TH

ALI GILBERT BAND

**FOOD!**

**CAMPING!!!**

**FOR MORE INFORMATION & TICKETS - [WWW.HOPWASWEEKENDER.CO.UK](http://WWW.HOPWASWEEKENDER.CO.UK)**

HOSTED AT TAMWORTH CRICKET CLUB - LOCATION 'OFF PLANTATION LANE, HOPWAS', B78 3AT - OFF ROAD PARKING AVAILABLE

**!!!**

# Together 4 Tamworth

# CARNIVAL



## FUN FOR THE WHOLE FAMILY!

### CARNIVAL STARTS AT 12 NOON FROM APOLLO RD LEADING THE PARADE THE MERCIAN BAND & REGIMENT



## Saturday

## 10am to 5pm 1st June 2019

DJs

Braddley Green  
Andy Davies &  
Mark Harper

## 10am to 5pm FREE ENTRY



## Tamworth Castle Grounds The Holloway B79 7NA



### CARNIVAL RIDES GAMES & DELICIOUS FOOD Bibbledy Bob, Dance Troupes & much more FB Together 4 Tamworth or 07790746748 for info



# Coton Green Primary School – School Terms and Holiday Dates 2018/2019

## Autumn Term 2018

**Staff:** Monday 3 September **Inset Day:1**

**Pupils:** Tuesday 4 September

**Staff:** Friday 26<sup>th</sup> October **Inset Day: 2**

**Holiday:** Monday 29 October - Friday 2 November

**Staff:** Monday 5<sup>th</sup> November **Inset Day: 3**

**Term ends:** Friday 21 December

**Holiday:** Monday 24 December - Friday 4 January

## Spring Term 2019

**Term starts:** Monday 7 January

**Half term:** Monday 18 February - Friday 22 February

**Term ends:** Friday 12 April

**Holiday:** Monday 15 April - Friday 26 April

**Easter Sunday:** Sunday 21 April

## Summer Term 2019

**Term starts:** Monday 29 April

**May Day:** Monday 6 May

**Staff:** Friday 24<sup>th</sup> May **Inset Day: 4**

**Half term:** Monday 27 May - Friday 31 May

**Term ends:** Monday 22 July **Inset Day: 5**

**Holiday:** Tuesday 23 July - Friday 30 August

Staff Total: 195 days Pupil Total: (pupils are required to attend for 190 days)

(Monday 3<sup>rd</sup> September 2018 is already fixed as an Inset day and the other four days are to be identified by schools. Coton Green Primary have worked with other schools to try and align our Inset days where possible).

## **Coton Green Kids' Zone**

### Breakfast Club

Runs from 8.00 am – 8.45 am

Please be aware food cannot not be prepared after 8.30 am.

*Thank you for your co-operation*

## **Coton Green Kids' Zone**

### **Monday to Friday**

**8.00 am – 8.45 am and 3.30 pm – 5.30 pm**

**If you wish to arrange a long term booking in advance, please see the Kids' Zone team**

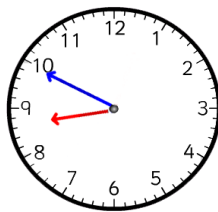
❖	Breakfast Club	£3.25 per day
❖	After School Club	£7.00 per day
❖	Both (wrap around care)	£10.00 per day
❖	Sibling rate for wrap around care	£9.00 per day

Please complete the booking form and send in to the school office or direct to the Kids' Zone club the week before to avoid disappointment.

Payment via ParentPay please.

*Booking forms are available from either the school office or Kids' Zone team*

## **NOTICE FOR PARENTS / CARERS**



**School punctuality is important and we would like to thank parents for their commitment in ensuring children arrive in good time for the 8:50 early work opening.**

**Please also be aware that children who are on site are the responsibility of parents and carers until handover at the classroom doors at 8:50.**

**During this time, it is important that children uphold the same high standards of behaviour as they do during school time.**

**We thank you in advance for your co-operation in this matter.**

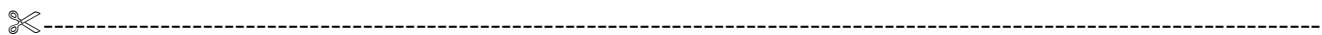
### Food Allergies

If your child has a food allergy, please collect a 'Chartwells Special Diet Request Form' from the school office.

#### Morning Break Sales

Toast	20p	American Pancakes	35p
Cheese on Toast	50p	Jam on Toast	30p
Tea Cake	35p	Half Bagel (toasted)	30p
Half Cheese Bagel	45p	Oatcake with Cheese	60p
Fruit Pot	30p	Crumpet with honey	30p
Veggie Sticks	25p		
*****			
500ml Water	35p	Fresh Milk	20p
Flavoured Milk	60p	Orange/Apple Shot 85ml	30p
Fruit Juice Beaker 150ml	35p	Hot Chocolate	50p

Please complete your menu choice for the week on a Monday morning to avoid disappointment.



Week Commencing <b>3<sup>rd</sup> June 2019</b>			Week 2	
Child's Name:			Class:	
<i>Monday</i>	Vegetable Supreme Pizza With Pasta Salad Served with Sweetcorn & Peas Fresh Seasonal Salad Bar	(v) BBQ Quorn Burger With Pasta Salad Served with Sweetcorn & Peas Fresh Seasonal Salad Bar	Jacket Potato with a choice of filling	Jacket Potato with a choice of filling
<i>Tuesday</i>	Pork Sausages with Creamed Potato, Roasted Peppers & Sweetcorn Fresh Seasonal Salad Bar	(v) Vegetarian Sausages with Creamed Potato Roasted Peppers & Sweetcorn Fresh Seasonal Salad Bar	Jacket Potato with a choice of filling	Choice of Assorted Sandwiches
<i>Wednesday</i>	Roast Chicken With Roast Potatoes & Gravy Cabbage and Carrots Fresh Seasonal Salad Bar	(v) Cauliflower & Creamed Corn Bake With Roast Potatoes & Gravy Cabbage and Carrots Fresh Seasonal Salad Bar	Jacket Potato with a choice of filling	Choice of Assorted Sandwiches
<i>Thursday</i>	Pasta Bolognaise Served with Broccoli & Sweetcorn Fresh Seasonal Salad Bar	(v) Chickpea Curry (Mild) Served with Wholegrain Rice Broccoli & Sweetcorn Fresh Seasonal Salad Bar	Jacket Potato with a choice of filling	Choice of Assorted Sandwiches
<i>Friday</i>	Golden Cod Fish Fillet Fingers Served with Chips Peas, Carrots & Baked Beans Fresh Seasonal Salad Bar	(V) Baked Bean & Cheese Wrap Served with Chips Peas, Carrots & Baked Beans Fresh Seasonal Salad Bar	Jacket Potato with a choice of filling	Choice of Assorted Sandwiches
Subject to availability				