

17th June 2019

Headteacher's Award

Friday 14th June 2019

GC Elder
Chloe C

CE Chestnut
Ellie S

DB Birch
Harri Y

CW Maple
Summer B

SR Hazel
Fletcher W

LSM Rowan
Chloe J

LST Hawthorn
Charlie R

SH Beech
Ella Mai-W
Jack M

ELP Holly
Holly F

JT Ash
Lucas W

RN Sycamore
Jayden C
Isobelle S



Class of the Week

3rd to 7th June 2019

Mrs Smith's Class – 98.87%

(Whole school attendance for the week: 92.73%)

(Whole School current attendance: 96.19%)

(Target 97%)

EXTRA CURRICULA ACTIVITIES

	Lunchtime	Afterschool
Monday		
Tuesday	Area Sports Practice	AVFC KS2 (6 of 9)
Wednesday	Area Sports Practice	
Thursday	Area Sports Practice	Singing Club 3.30 pm – 4.15 pm CANCELLED Library – 3.30 pm – 4.00 pm KS2 Camera Club 3.30 pm – 4.15 pm
Friday	Singing Club Area Sports Practice	Library Y3/4 3.30 pm – 4.00 pm

Upcoming Dates

JUNE

Monday 17th
Top Up Swimming
Y6 Visit

Wednesday 19th
Sports for school Event - am
3.45pm - Area Sports

Thursday 20th
Y5/6 Enterprise Activity

Wednesday 26th – Thursday 27th
New Entrants – Meet the Teacher

Wednesday 26th – Friday 28th
Y6 Rawlett Transition Days
Y6 Landau QEMS Transition Days

Thursday 27th
School Discos

Friday 28th
Big Sing for Years 1/2/3

JULY

Tuesday 2nd
K2M Concert Y3 & Y5

Thursday 4th July
Non-Uniform Day for PTFA

Friday 5th
PTFA Summer Fayre

Monday 8th
9.30 am EYFS Sports Day

Tuesday 9th
9.30 am KS1 Sports Day

Wednesday 10th
Summer Concert

Thursday 11th
9.30 am KS2 Sports Day

Friday 12th
Y1/2 Visit

Monday 15th
Y6 Leavers Concert – 6.00pm



Coton Green Primary School's Got Talent.

If you think that you've a great talent, and you would like to share it with the rest of the school, please enter our fantastic talent show.

An act from each phase: Y1/2, Y3/4 and Y5/6, and in each colour team, will be chosen at the auditions.

Auditions will be held on the afternoon of Monday 24th June.

Each act can only be up to 2 minutes long.

If you would like to enter, please collect an entry form from the School Council in Y5.

Coton Green's Got Talent will then be held on Monday 1st July.

Guest performance from EYFS!

Good Luck!

School Council

15:30 - 17:30



YEAR 5/6 INVITES YOU TO AN AFTERNOON OF ENTERPRISE AT
COTON GREEN PRIMARY SCHOOL

**BROWSE, SAMPLE AND BUY FROM A WHOLE
RANGE OF COMPANIES CREATED BY CHILDREN
EXPERIENCING THE WORLD OF
ENTREPRENEURSHIP FOR THE FIRST TIME.**

COME AND SUPPORT THE CHILDREN IN THEIR VENTURES AS
THEY PRESENT TO YOU THEIR HIGH STANDARD OF PRODUCTS &
SERVICES ON THURSDAY 20TH JUNE.

FASHION

ART

FOOD

RETAIL

BEAUTY

BOOKS

PET TREATS

**HAND-CRAFTED
ITEMS**

CONFECTIONERY

GARDENING GOODS



SCIENCE FAIR

HOW DOES...?

We are excited to announce there will be a science fair held in our school on **Wednesday 3rd July**. The best entrants will go forward to represent Coton Green Primary School at the Rawlett science fair, along with other primary schools from the local area, on **Friday 12th July**.

You must let Miss Stevenson know if you will be participating in the Science fair by Friday 14th June.

You will need to be able to present your understanding of how something works e.g. How does a boat float? / How does an eye work? / How does a new day begin? (You decide!)

You can work and plan on your own or with a partner (**no more than 2 per group**). You must produce a visual display to accompany your experiment (including your names, age and year group) and you will need to be able to demonstrate (via video or photographs if it's messy or time consuming!) and explain the science behind your investigation to an audience - keep it simple.

You will gain extra credit for linking your demonstration/investigation/experiment to a scientist, especially if you can raise awareness of lesser known scientists.

For ideas you may wish to use books or web sites, such as

www.sciencebob.com and www.sciencekids.co.nz



Toileting Advice

Immunisations Advice

Let's Get Ready for School Roadshow

Routines & Behaviours

Date: 26th June 1-3pm

Venue: Families First, Basin Lane, Tamworth B77 2AH

With Health Visitors and School Nurses

Healthy Eating & Activity

Speech and Language & Hearing concerns

Self care & Social Skills

REMINDER
Chasewater Residential
Final payment due:
 Friday: 21st June £36.00/£19.00 PP
 Details are on ParentPay.

PE Kit - Reminder

Can children have their PE kits in school at all times as they will be practising for Sports Day.

Thank you.

PE Kit Amnesty

If your child still has a school PE kit at home, please return to Miss Wesley or Mr Parker ASAP.

Kit is still required for Area Sports and other team events this term!

STREET FOOD

GIN & CARIBBEAN

HOPWAS TASTES, TUNES AND TENTS

FAMILY WEEKENDER

HOSTED AT TAMWORTH CRICKET CLUB
 LOCATION 'OFF PLANTATION LANE, HOPWAS' B78 3AT
 SAT 15TH & SUN 16TH JUNE 2019

FATHERS DAY SUN 16TH JUNE

TOTALLY WIPED-OUT

BEST DAD

LIVE MUSIC

THE SKA'S45 BAND
 MATILDA PRATT
 JUDGE BRITTON
 SHEENA VULTAGGIO
 ALI GILBERT BAND

CAMPING!!!

SUN 16TH

FOR MORE INFORMATION & TICKETS - WWW.HOPWASWEEKENDER.CO.UK

HOSTED AT TAMWORTH CRICKET CLUB - LOCATION 'OFF PLANTATION LANE, HOPWAS,' B78 3AT - OFF ROAD PARKING AVAILABLE

Coton Green Primary School – School Terms and Holiday Dates 2018/2019

Autumn Term 2018

Staff: Monday 3 September **Inset Day:1**

Pupils: Tuesday 4 September

Staff: Friday 26th October **Inset Day: 2**

Holiday: Monday 29 October - Friday 2 November

Staff: Monday 5th November **Inset Day: 3**

Term ends: Friday 21 December

Holiday: Monday 24 December - Friday 4 January

Spring Term 2019

Term starts: Monday 7 January

Half term: Monday 18 February - Friday 22 February

Term ends: Friday 12 April

Holiday: Monday 15 April - Friday 26 April

Easter Sunday: Sunday 21 April

Summer Term 2019

Term starts: Monday 29 April

May Day: Monday 6 May

Staff: Friday 24th May **Inset Day: 4**

Half term: Monday 27 May - Friday 31 May

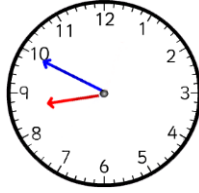
Term ends: Monday 22 July **Inset Day: 5**

Holiday: Tuesday 23 July - Friday 30 August

Staff Total: 195 days Pupil Total: (pupils are required to attend for 190 days)

(Monday 3rd September 2018 is already fixed as an Inset day and the other four days are to be identified by schools. Coton Green Primary have worked with other schools to try and align our Inset days where possible).

NOTICE FOR PARENTS / CARERS



School punctuality is important and we would like to thank parents for their commitment in ensuring children arrive in good time for the 8:50 early work opening.

Please also be aware that children who are on site are the responsibility of parents and carers until handover at the classroom doors at 8:50.

During this time, it is important that children uphold the same high standards of behaviour as they do during school time.

We thank you in advance for your co-operation in this matter.

Coton Green Kids' Zone

Breakfast Club

Runs from 8.00 am – 8.45 am

Please be aware food cannot not be prepared after 8.30 am.

Thank you for your co-operation

Coton Green Kids' Zone

Monday to Friday

8.00 am – 8.45 am and 3.30 pm – 5.30 pm

If you wish to arrange a long term booking in advance, please see the Kids' Zone team

- ❖ Breakfast Club £3.25 per day
- ❖ After School Club £7.00 per day
- ❖ Both (wrap around care) £10.00 per day
- ❖ Sibling rate for wrap around care £9.00 per day

Please complete the booking form and send in to the school office or direct to the Kids' Zone club the week before to avoid disappointment.

Payment via ParentPay please.

Booking forms are available from either the school office or Kids' Zone team

Lunchtime Menu Orders

Please make sure all school meals are pre-ordered using the menu slips from the kitchen and newsletter.

This will make sure your child receives the meal of their choice and prevent waste in the kitchen.

Food Allergies

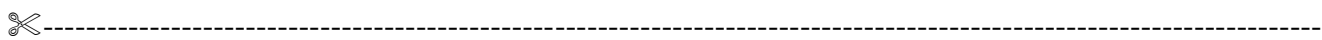
If your child has a food allergy, please collect a 'Chartwells Special Diet Request Form' from the school office.

<u>Morning Break Sales</u>			
Toast	20p	American Pancakes	35p
Cheese on Toast	50p	Jam on Toast	30p
Tea Cake	35p	Half Bagel (toasted)	30p
Half Cheese Bagel	45p	Oatcake with Cheese	60p
Fruit Pot	30p	Crumpet with honey	30p
Veggie Sticks	25p		

500ml Water	35p	Fresh Milk	20p
Flavoured Milk	60p	Orange/Apple Shot 85ml	30p
Fruit Juice Beaker 150ml	35p	Hot Chocolate	50p

Please complete your menu choice for the week on a Monday morning to avoid disappointment.

** Please note changes to menu on Tuesday and Wednesday Thank you**



Week Commencing 17th June 2019			Week 1	
Child's Name:			Class:	
<i>Monday</i>	Tomato & Mozzarella Pizza with Jacket wedges, Broccoli and Sweetcorn Fresh Seasonal Salad Bar	(v) Chinese Style Veggie Noodles With Broccoli and Sweetcorn Fresh Seasonal Salad Bar	Jacket Potato with a choice of filling	Choice of Assorted Sandwiches
<i>Tuesday</i>	Chicken & Potato Pie With Green Beans and Mediterranean Vegetables Fresh Seasonal Salad Bar	(v) Veggie Pasta Bolognaise With Green Beans and Mediterranean Vegetables Fresh Seasonal Salad Bar	Jacket Potato with a choice of filling	Choice of Assorted Sandwiches
<i>Wednesday</i>	Roast Turkey with Roast Potatoes & Gravy, Carrots and Cabbage Fresh Seasonal Salad Bar	(v) Baked Bean and Cheese Wrap With Roast Potatoes, Carrots and Cabbage Fresh Seasonal Salad Bar	Jacket Potato with a choice of filling	Choice of Assorted Sandwiches
<i>Thursday</i>	BBQ Beef Meatballs With Wholegrain Rice, Sweetcorn and Roasted Seasonal Vegetables Fresh Seasonal Salad Bar	(v) BBQ Sweetcorn Stack (Layered Tortilla Bake) Wholegrain Rice, Sweetcorn and Roasted Seasonal Vegetables Fresh Seasonal Salad Bar	Jacket Potato with a choice of filling	Choice of Assorted Sandwiches
<i>Friday</i>	Golden Cod Fish Fillet Fingers & Chips, Peas Carrots & Baked Beans Fresh Seasonal Salad Bar	(v) Vegetarian Hotdog with Chips, Peas, Carrots & Baked Beans Fresh Seasonal Salad Bar	Jacket Potato with a choice of filling	Choice of Assorted Sandwiches
Subject to availability				