

## 1st April 2019

### Headteacher's Award

Friday 29<sup>th</sup> March 2019

GC Elder  
**Jack J**

CE Chestnut  
**Amelia W**

DB Birch  
**Lottie- Mai C**

CW Maple  
**Phoebe C**

SR Hazel  
**Layla G**

LSM Rowan  
**Lia D**

LST Hawthorn  
**Henry H  
James S**

SH Beech

ELP Holly  
**Ava B**

JT Ash  
**Miren E**

RN Sycamore



#### Class of the Week

18<sup>th</sup> – 22<sup>nd</sup> March 2019

Mr Birch's Class – 98.67%

(Whole school attendance for the week: 95.70%)

(Whole School current attendance: 96.46%)

(Target 97%)

#### PTFA Easter Bingo Update!!

Based on feedback we had last year we are making this year's event shorter (we are aiming to be finished playing bingo by 4:45 and then have some social time left over for those who want a coffee and nibble on their choccie haul)!

We will also be selling books of tickets at the start so there will be no need to queue or wait for new ones between each game we hope this will ensure it runs much smoother. We really hope you can make it!

#### EXTRA CURRICULA ACTIVITIES

	Lunchtime	Afterschool
<b>Monday</b>		Y1/2 Multi Skills (7 of 9)
<b>Tuesday</b>	Cross Country	
<b>Wednesday</b>	Football	
<b>Thursday</b>	Netball Singing club 5/6	Singing Club 3.30 pm - 4.15 pm  Library – 3.30 pm – 4.00 pm  KS2 Table Tennis (7 of 9)
<b>Friday</b>	Singing Club Cross Country	Library Y3/4 3.30 pm – 4.00 pm

#### Upcoming Dates

#### APRIL

**Monday 1<sup>st</sup> - Friday 5<sup>th</sup> April**

**BIG PEDAL**

**Monday 1<sup>st</sup>**

**Y5 Swimming**

**Tuesday 2<sup>nd</sup>**

**Y5/6 – Trip**

**Miss Stevenson's Class Assembly**

**Thursday 4<sup>th</sup>**

**Mrs Holbrook's Class Assembly**

**Non-Uniform Day for PTFA Chocolate  
Bingo**

**Monday 8<sup>th</sup> April**

**Y5 Swimming**

**PTFA Easter Bingo 3.30 pm – 4.45 pm  
(School Hall)**

**Wednesday 10<sup>th</sup>**

**EYFS Easter Bonnet Parade 2.30 pm**

**Thursday 11<sup>th</sup>**

**Live Music Concert (children only) 9.10 am**

**Friday 12<sup>th</sup>**

**KS1 Easter Bonnet 9.10 am**

**School Closes for Easter @ 3.30pm**

**Monday 29<sup>th</sup>**

**School opens for Summer Term**

#### MAY

**Monday 6<sup>th</sup> May – Bank Holiday**

#### Big Pedal

#### Results of Week One

We have had 753 journeys' that is an amazing 44.95% of the school population. Well done everyone, let's see what we can do in week two.



# Info sheet

Sustrans Big Pedal is the UK's largest inter-school cycling, walking and scooting challenge that inspires pupils, staff and parents to choose 'human power' for their journey to school.

Lead sponsor

m-ero

Supporting sponsor

tonik

## The 2019 challenge

Travel around the body, learning, exploring and getting active for Sustrans Big Pedal. For the first time, **walking will be counted** alongside cycling and scooting.

This year the challenge will run from **25 March - 5 April**. Register for the challenge from January 2019 at [www.bigpedal.org.uk](http://www.bigpedal.org.uk).

86%

of participating schools surveyed said it raised awareness of cycling and scooting in their school

82%

of schools surveyed said that pupils continued to cycle or scoot to school following the event

## How it works

On each day of the challenge schools compete to see who can record the greatest number of pupils, staff and parents cycling, walking, scooting or using a wheelchair to school.

A school's best five days will determine their final position and schools at the top of their leaderboards will receive an exclusive Sustrans Big Pedal Trophy.

## 2018 was an amazing year

A staggering **1,179 kg of nitrogen oxide was avoided** as a result of the 10-day challenge. Almost **46 million calories were burned** from participants cycling and scooting to school.

If the journeys logged had been made by car, we saved over 576 tonnes of CO<sub>2</sub> and over 60,000 gallons of fuel, costing over £330,000.

In 2018, over

1,200

schools made

989,414

journeys to school by bike and scooter

Sustrans is the charity making it easier for people to walk and cycle.

We connect people and places, create livable neighbourhoods, transform the school run and deliver a happier, healthier commute. Join us on our journey. [www.sustrans.org.uk](http://www.sustrans.org.uk)

Sustrans is a registered charity no. 202807 (England and Wales) SC032862 (Scotland) © Sustrans January 2019

sustrans  
100% FUEL EFFICIENT

**Holiday fun** 2019  
**Cricket Camp**  
**Tamworth CC**  
**April 23rd - 3 days Cricket camp**

Tamworth CC members get 10% off, on proof at time of booking

\* For 3 day camps there will be an option to extend to a week based on demand \*

Fully Qualified ECB COACH - All Coaches Qualified  
 Over 10 years of coaching experience  
 Coaches association member  
 Paediatric First Aider  
 Played 2XI Cricket for Northants  
 All Coaching Staff are DBS checked  
 Camps run through the school holidays - see dates  
 Camps at RUGBY CRICKET CLUB, WILLOUGHBY & TAMWORTH CRICKET CLUB

Jason Jakeman

Cricket

5-17 year olds  
 9.30 a.m. - 3.30 p.m.  
 £60 for 3 days  
 or £25 per day  
 (£100 for the week)

Bring packed lunch and drinks and wear layers as it is outdoors

07776 256625 \*Ts & Cs apply  
 JASON\_JAKEMAN89@HOTMAIL.COM

www.katiecarrdesign.com

Tamworth CC  
 Hints Lane  
 Tamworth  
 B78 3AT

**Parking**

It has been brought to our attention that parents have been inconsiderately parking around school, in particular Scimitar Close, when collecting and dropping off their children.

Parents are reminded to park responsibly outside school and are being urged to put safety first by parking responsibly during drop-off and pick-up times.

**PLEASE DO NOT BLOCK OUR NEIGHBOURS' DRIVEWAYS.**

Thank you for your cooperation.

**Chasewater Residential**

Instalment dates:

Friday: 29 <sup>th</sup> March	£36.00/£19.00 PP
Friday: 3 <sup>rd</sup> May	£36.00/£19.00 PP
Friday: 24 <sup>th</sup> May	£36.00/£19.00 PP
Friday: 21 <sup>st</sup> June	£36.00/£19.00 PP

Details are on Parentpay.

**Headlice**

We have had reports of headlice in school.

Please check your child's hair on a regular basis.

*Thank you for your co-operation.*

# Coton Green Primary School – School Terms and Holiday Dates 2018/2019

## Autumn Term 2018

**Staff:** Monday 3 September **Inset Day:1**

**Pupils:** Tuesday 4 September

**Staff:** Friday 26<sup>th</sup> October **Inset Day: 2**

**Holiday:** Monday 29 October - Friday 2 November

**Staff:** Monday 5<sup>th</sup> November **Inset Day: 3**

**Term ends:** Friday 21 December

**Holiday:** Monday 24 December - Friday 4 January

## Spring Term 2019

**Term starts:** Monday 7 January

**Half term:** Monday 18 February - Friday 22 February

**Term ends:** Friday 12 April

**Holiday:** Monday 15 April - Friday 26 April

**Easter Sunday:** Sunday 21 April

## Summer Term 2019

**Term starts:** Monday 29 April

**May Day:** Monday 6 May

**Staff:** Friday 24<sup>th</sup> May **Inset Day: 5**

**Half term:** Monday 27 May - Friday 31 May

**Term ends:** Monday 22 July **Inset Day: 4**

**Holiday:** Tuesday 23 July - Friday 30 August

Staff Total: 195 days Pupil Total: (pupils are required to attend for 190 days)

(Monday 3<sup>rd</sup> September 2018 is already fixed as an Inset day and the other four days are to be identified by schools. Coton Green Primary have worked with other schools to try and align our Inset days where possible).

## **Coton Green Kids' Zone**

### Breakfast Club

Runs from 8.00 am – 8.45 am

Please be aware food cannot not be prepared after 8.30 am.

*Thank you for your co-operation*

## **Coton Green Kids' Zone**

### **Monday to Friday**

**8.00 am – 8.45 am and 3.30 pm – 5.30 pm**

**If you wish to arrange a long term booking in advance, please see the Kids' Zone team**

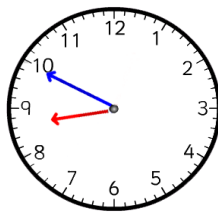
❖	Breakfast Club	£3.25 per day
❖	After School Club	£7.00 per day
❖	Both (wrap around care)	£10.00 per day
❖	Sibling rate for wrap around care	£9.00 per day

Please complete the booking form and send in to the school office or direct to the Kids' Zone club the week before to avoid disappointment.

Payment via ParentPay please.

*Booking forms are available from either the school office or Kids' Zone team*

## **NOTICE FOR PARENTS / CARERS**



**School punctuality is important and we would like to thank parents for their commitment in ensuring children arrive in good time for the 8:50 early work opening.**

**Please also be aware that children who are on site are the responsibility of parents and carers until handover at the classroom doors at 8:50.**

**During this time, it is important that children uphold the same high standards of behaviour as they do during school time.**

**We thank you in advance for your co-operation in this matter.**

### Food Allergies

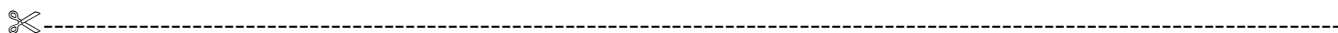
If your child has a food allergy, please collect a 'Chartwells Special Diet Request Form' from the school office.

#### Morning Break Sales

Toast	20p	American Pancakes	35p
Cheese on Toast	50p	Jam on Toast	30p
Tea Cake	35p	Half Bagel (toasted)	30p
Half Cheese Bagel	45p	Oatcake with Cheese	60p
Fruit Pot	30p	Crumpet with honey	30p
Veggie Sticks	25p		
*****			
500ml Water	35p	Fresh Milk	20p
Flavoured Milk	60p	Orange/Apple Shot 85ml	30p
Fruit Juice Beaker 150ml	35p	Hot Chocolate	50p

Please complete your menu choice for the week on a Monday morning to avoid disappointment.

*Thank you*



Week Commencing <b>1<sup>ST</sup> April 2019</b>			Week 1	
Child's Name:			Class:	
<i>Monday</i>	(v) Mozzarella & Tomato Pizza with Pasta Salad, Carrot Batons, Peas Fresh Seasonal Salad Bar	(v) Bean Burger in a Bun Carrot Batons, Peas Fresh Seasonal Salad Bar	Jacket Potato with a choice of filling	Choice of Assorted Sandwiches
<i>Tuesday</i>	Chicken Fillet in a Bun with Jacket Wedges, Roasted Vegetables Fresh Seasonal Salad Bar	(v) Creamy Broccoli and Sweetcorn Pasta with Roasted Vegetables Fresh Seasonal Salad Bar	Jacket Potato with a choice of filling	Choice of Assorted Sandwiches
<i>Wednesday</i>	Roast Turkey with Roast Potatoes & Gravy, Green Beans, Carrot Batons. Fresh Seasonal Salad Bar	(v) Quorn Roast With Roast Potatoes & Gravy, Green Beans, Carrot Batons. Fresh Seasonal Salad Bar	Jacket Potato with a choice of filling	Choice of Assorted Sandwiches
<i>Thursday</i>	Mexican Beef Chilli Served with Rice Broccoli and Sweetcorn Fresh Seasonal Salad Bar	(v) Macaroni Cheese Served with Broccoli and Sweetcorn Fresh Seasonal Salad Bar	Jacket Potato with a choice of filling	Choice of Assorted Sandwiches
<i>Friday</i>	Golden Cod Fish Fillet Fingers & Chips, Peas Carrot Batons & Baked Beans Fresh Seasonal Salad Bar	(v) Quorn Dippers with Chips, Peas, Carrot Batons & Baked Beans Fresh Seasonal Salad Bar	Jacket Potato with a choice of filling	Choice of Assorted Sandwiches
Subject to availability				