

Weekly Newsletter

11th February 2019

Half-Term

School closes Friday 15th February @ 3.30pm
and re-opens
Monday 25th February @ 8.50am

Notice to Parents/Carers

Please note final Inset Day has been set:

FRIDAY 24th MAY 2019

School will be closed to pupils

Class of the Week



28th January – 1st February 2019

Miss Stevenson's Class –99.33%

(Whole school attendance for the week: 96.08%)

(Whole School current attendance: 96.57%)

(Target 97%)

EXTRA CURRICULA ACTIVITIES

	Lunchtime	Afterschool
Monday		Y1/2 Multi Skills (2 of 9)
Tuesday	Cross Country	AVFC KS2 (5 of 5)
Wednesday	Football	
Thursday	Netball Singing Club Y5/6	Library – 3.30 pm – 4.00 pm Please return any outstanding books KS2 Table Tennis (2 of 9)
Friday	Singing Club Cross Country	

Upcoming Dates

FEBRUARY

Monday 11th

Swimming - Y5
Year 3 Violin Assembly 9.10 am
Parent Consultations

Wednesday 13th

Parent Consultations

Thursday 14th

Year 5 Ukulele Assembly 11.00 am
Swimming Gala Heats

Friday 15th

School closes @ 3.30 pm

Monday 18th – Friday 22nd

Half-Term

Monday 25th

School opens @ 8.50 am

MARCH

Thursday 7th

World Book Day
(Dress as your favourite book character)

Tuesday 26th

Mrs Tanner's Class – Trip

Thursday 28th

Miss Palser's Class – Trip

Friday 29th

Mr Newton's Class – Trip

APRIL

Tuesday 2nd

Y5/6 - Trip

May

Friday 24th

INSET Day

Teddy Sale

A big, big thank you to all who bought
teddies.

We have raised a fantastic £157.70

School Council

The Pearson – Thank a Teacher Campaign

The Pearson Teaching Awards are a national, annual awards which recognise and celebrate the exceptional and life changing work of teachers across the country. Our UK ceremony is also televised by the BBC on BBC2 as Britain's Classroom Heroes.

A great way to show appreciation is by getting involved in our 'Thank a Teacher' campaign. Encourage pupils and parents to say "thank you" to an amazing teacher and we'll send them a lovely card through the post.

<https://www.teachingawards.com/stuff/uploads/2018/12/Thank-a-Teacher-poster.pdf>

Procedures for inclement weather

Snow fall does not trigger a closure of a school and we are aware of the impact snow can have on travel. Therefore, we will make allowances for lateness and arrangements for early pickups to allow for any severe travel disruption as a result of inclement weather.

However, in extreme cases there may be no other alternative than to close, or part close the school. In such an event notification will be available through a number of sources, however our most efficient would be to use our facility to send texts and emails to you (please ensure we have your up-to-date email and mobile number).

We would endeavour to make any such decision as early as possible and would only close as a last resort.

Other notifications will include:

- local radio stations
- Staffordshire school closure website

<http://www.staffordshire.gov.uk/education/schoolsandcolleges/emergencyclosures/schoolclosurelist/schoolclosurelist.aspx>

• **You may also wish to sign up for alerts:** [Sign up for school closure alerts](#) via text message and email, to be kept informed if our school is closed. This is a simple procedure where you just need to register your details to trigger a notification.

- School website
www.cotongreenprimary.com

REMINDER

If your child has sickness and / or diarrhoea, school policy is that your child should not return to school until 48 hours from the last symptom.

Thank you for your co-operation.

Thursday 7th March

World Book Day

(Dress as your favourite book character)



Coton Green Pre-School Nursery **STAY AND PLAY**

Date & Times - Wednesdays 1:15pm - 2:45pm

Price - £1.50

Age - 0-4 years



Craft and messy play

Snack time

Stories and songs

Make new friends

Help your child learn through play

**COTON GREEN PRE-SCHOOL NURSERY
(WITHIN THE GROUNDS OF COTON GREEN PRIMARY SCHOOL)**

Kipling Rise
Coton Green
Tamworth
Staffordshire
B79 8LX

Tel: 01827 337464

www.cotongreennursery.co.uk
cotongreenpreschoolnursery@yahoo.co.uk

Coton Green Primary School – School Terms and Holiday Dates 2018/2019

Autumn Term 2018

Staff: Monday 3 September **Inset Day:1**

Pupils: Tuesday 4 September

Staff: Friday 26th October **Inset Day: 2**

Holiday: Monday 29 October - Friday 2 November

Staff: Monday 5th November **Inset Day: 3**

Term ends: Friday 21 December

Holiday: Monday 24 December - Friday 4 January

Spring Term 2019

Term starts: Monday 7 January

Half term: Monday 18 February - Friday 22 February

Term ends: Friday 12 April

Holiday: Monday 15 April - Friday 26 April

Easter Sunday: Sunday 21 April

Summer Term 2019

Term starts: Monday 29 April

May Day: Monday 6 May

Staff: Friday 24th May **Inset Day: 5**

Half term: Monday 27 May - Friday 31 May

Term ends: Monday 22 July **Inset Day: 4**

Holiday: Tuesday 23 July - Friday 30 August

Staff Total: 195 days Pupil Total: (pupils are required to attend for 190 days)

(Monday 3rd September 2018 is already fixed as an Inset day and the other four days are to be identified by schools. Coton Green Primary have worked with other schools to try and align our Inset days where possible).

Coton Green Kids' Zone

Breakfast Club

Runs from 8.00 am – 8.45 am

Please be aware food cannot not be prepared after 8.30 am.

Thank you for your co-operation

REMINDER

It is school policy that dogs are not allowed on school premises at any time.

This includes leaving dogs unattended at school entrances.

The safety of all in our learning family is our number one priority.

Thank you for your continued co-operation.

Coton Green Kids' Zone

Monday to Friday

8.00 am – 8.45 am and 3.30 pm – 5.30 pm

If you wish to arrange a long term booking in advance, please see the Kids' Zone team

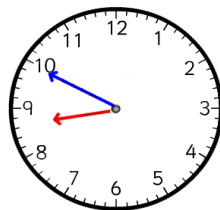
❖	Breakfast Club	£3.25 per day
❖	After School Club	£7.00 per day
❖	Both (wrap around care)	£10.00 per day
❖	Sibling rate for wrap around care	£9.00 per day

Please complete the booking form and send in to the school office or direct to the Kids' Zone club the week before to avoid disappointment.

Payment via ParentPay please.

Booking forms are available from either the school office or Kids' Zone team

NOTICE FOR PARENTS / CARERS



School punctuality is important and we would like to thank parents for their commitment in ensuring children arrive in good time for the 8:50 early work opening.

Please also be aware that children who are on site are the responsibility of parents and carers until handover at the classroom doors at 8:50.

During this time, it is important that children uphold the same high standards of behaviour as they do during school time.

We thank you in advance for your co-operation in this matter.

Food Allergies

If your child has a food allergy, please collect a 'Chartwells Special Diet Request Form' from the school office.

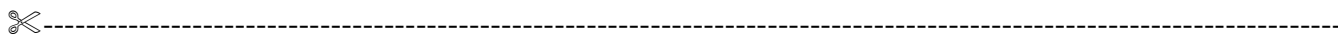
Morning Break Sales

Toast	20p	American Pancakes	35p
Cheese on Toast	50p	Jam on Toast	30p
Tea Cake	35p	Half Bagel (toasted)	30p
Half Cheese Bagel	45p	Oatcake with Cheese	60p
Fruit Pot	30p	Crumpet with honey	30p
Veggie Sticks	25p		

500ml Water	35p	Fresh Milk	20p
Flavoured Milk	60p	Orange/Apple Shot 85ml	30p
Fruit Juice Beaker 150ml	35p	Hot Chocolate	50p

Please complete your menu choice for the week on a Monday morning to avoid disappointment.

Thank you



Week Commencing 11th February 2019			Week 1	
Child's Name:			Class:	
<i>Monday</i>	(v) Mozzarella & Tomato Pizza with Pasta Salad, Carrot Batons, Peas Fresh Seasonal Salad Bar	(v) Bean Burger in a Bun Carrot Batons, Peas Fresh Seasonal Salad Bar	Jacket Potato with a choice of filling	Choice of Assorted Sandwiches
<i>Tuesday</i>	Chicken Fillet in a Bun with Jacket Wedges, Roasted Vegetables Fresh Seasonal Salad Bar	(v) Creamy Broccoli and Sweetcorn Pasta with Roasted Vegetables Fresh Seasonal Salad Bar	Jacket Potato with a choice of filling	Choice of Assorted Sandwiches
<i>Wednesday</i>	Roast Turkey with Roast Potatoes & Gravy, Green Beans, Carrot Batons. Fresh Seasonal Salad Bar	(v) Quorn Roast With Roast Potatoes & Gravy, Green Beans, Carrot Batons. Fresh Seasonal Salad Bar	Jacket Potato with a choice of filling	Choice of Assorted Sandwiches
<i>Thursday</i>	Mexican Beef Chilli Con Carne with Rice, Sweetcorn, Broccoli Fresh Seasonal Salad Bar	(v) Macaroni Cheese with Sweetcorn, Broccoli Fresh Seasonal Salad Bar	Jacket Potato with a choice of filling	Choice of Assorted Sandwiches
<i>Friday</i>	Crispy Fish Fingers & Chips with Peas, Carrot Batons & Baked Beans Fresh Seasonal Salad Bar	(v) Quorn Dippers with Chips, Peas, Carrot Batons & Baked Beans Fresh Seasonal Salad Bar	Jacket Potato with a choice of filling	Choice of Assorted Sandwiches
Subject to availability				