

Weekly Newsletter

4th February 2019

Headteacher's Award

Friday 1st February 2019

GC Elder
Breyson B

CE Chestnut
Ryan H

DB Birch
Layla H

CW Maple
Joshua S

SR Hazel
Luca R

LSM Rowan
Ruby E

LST Hawthorn
Joseph W

SH Beech
Alex G

ELP Holly
Sam B

JT Ash
Chloe T

RN Sycamore
Heidi C



Class of the Week

21st – 25th January 2019

Mr Newton's Class – 99.33%
(Whole school attendance for the week: 95.79%)

(Whole School current attendance: 96.59%)
(Target 97%)

EXTRA CURRICULA ACTIVITIES

	Lunchtime	Afterschool
Monday		Y1/2 Multi Skills (1 of 9)
Tuesday	Cross Country	AVFC KS2 (4 of 5)
Wednesday	Football	
Thursday	Netball Singing Club Y5/6	Singing Club 3.30 pm - 4.15 pm Library – 3.30 pm – 4.00 pm KS2 Table Tennis (1 of 9)
Friday	Singing Club Cross Country	

Upcoming Dates

FEBRUARY

Monday 4th

Swimming - Y5
Y1 Inspire Workshop

Wednesday 6th

Y2 SATs Inspire Workshop

Monday 11th

Year 3 Violin Assembly 9.10 am
Parent Consultations

Wednesday 13th

Parent Consultations

Thursday 14th

Year 5 Ukulele Assembly 11.00 am
Swimming Gala Heats

Friday 15th

School closes @ 3.30 pm

Monday 18th – Friday 22nd

Half-Term

Monday 25th

School opens @ 8.50 am

MARCH

Thursday 7th March

World Book Day
(Dress as your favourite book character)

Tuesday 26th March

Mrs Tanner's Class – Trip

Thursday 28th March

Miss Palser's Class – Trip

Friday 29th March

Mr Newton's Class – Trip

APRIL

Tuesday 2nd April

Y5/6 - Trip

REMINDER

Soft Toy Sale

Tuesday 5th February
(at morning break)

School Council

Procedures for inclement weather

Snow fall does not trigger a closure of a school and we are aware of the impact snow can have on travel. Therefore, we will make allowances for lateness and arrangements for early pickups to allow for any severe travel disruption as a result of inclement weather.

However, in extreme cases there may be no other alternative than to close, or part close the school. In such an event notification will be available through a number of sources, however our most efficient would be to use our facility to send texts and emails to you (please ensure we have your up-to-date email and mobile number).

We would endeavour to make any such decision as early as possible and would only close as a last resort.

Other notifications will include:

- local radio stations
- Staffordshire school closure website

<http://www.staffordshire.gov.uk/education/schoolsandcolleges/emergencyclosures/schoolclosurelist/schoolclosurelist.aspx>

• **You may also wish to sign up for alerts:** [Sign up for school closure alerts](#) via text message and email, to be kept informed if our school is closed. This is a simple procedure where you just need to register your details to trigger a notification.

- School website
www.cotongreenprimary.com

Chartwells - Vacancy

Catering Supervisor

26.25 hours per week - Term Time plus 1 week

We are looking for an experienced cook and people manager to help us continue providing great food with a smile at this fully subscribed primary school with an experienced team to support your work to continue developing the food offer and fresh ideas.

If you are interested, please contact:

**Caroline Wescott
07584 155 856**

**Group Manager
for Chartwells**

COTON GREEN PRIMARY SCHOOL

We are looking to appoint a friendly and committed individual to join our school team as soon as possible.

Our Senior Site Technician is one of the most important roles in the school and for this we are keen to appoint the right individual.

We require an approachable, friendly and flexible member of staff to work for 25 hours each week.

The successful applicant will be expected to:

- open and close the premises at agreed times, morning and evenings
- be responsible for the school site including the buildings
- take responsibility for maintenance and specific cleaning tasks
- be able to carry out minor repairs/projects including plumbing, joinery, electrical work and internal decoration
- support the school to enable it to function effectively

If you feel you have the skills to fulfil this role or require more information, then we encourage you to make an appointment to visit the school please contact us on 01827 337456 to make an appointment.

To apply for this post, please see the More Information section below.

Closing Date: Monday 4th February 2019

Interview Date: Wednesday 13th February 2019

All applications should be returned directly to the school.

This school is committed to safeguarding and promoting the welfare of children and young people/vulnerable adults and expect all staff and volunteers to share this commitment.

This position is subject to an Enhanced Disclosure check under the Rehabilitation of Offenders Act 1974. Further details regarding this check are available from schools or by visiting www.crb.gov.uk

Thursday 7th March

World Book Day

(Dress as your favourite book character)



Coton Green Pre-School Nursery
STAY AND PLAY

Date & Times - Wednesdays 1:15pm - 2:45pm

Price - £1.50

Age - 0-4 years



**Craft and messy
play**

Snack time

Stories and songs

Make new friends

**Help your child
learn through play**

**COTON GREEN PRE-
SCHOOL NURSERY
(WITHIN THE
GROUNDS OF COTON
GREEN PRIMARY
SCHOOL)**

Kiplag Rise
Coton Green
Tamworth
Staffordshire
B79 8LX

Tel: 01827 337464

www.cotongreennursery.co.uk

cotongreenpreschoolnursery@yaboo.co.uk

Coton Green Primary School – School Terms and Holiday Dates 2018/2019

Autumn Term 2018

Staff: Monday 3 September **Inset Day:1**

Pupils: Tuesday 4 September

Staff: Friday 26th October **Inset Day: 2**

Holiday: Monday 29 October - Friday 2 November

Staff: Monday 5th November **Inset Day: 3**

Term ends: Friday 21 December

Holiday: Monday 24 December - Friday 4 January

Spring Term 2019

Term starts: Monday 7 January

Half term: Monday 18 February - Friday 22 February

Term ends: Friday 12 April

Holiday: Monday 15 April - Friday 26 April

Easter Sunday: Sunday 21 April

Summer Term 2019

Term starts: Monday 29 April

May Day: Monday 6 May

Half term: Monday 27 May - Friday 31 May

Term ends: Monday 22 July **Inset Day: 4**

Holiday: Tuesday 23 July - Friday 30 August

There is 1 other Inset day to be confirmed.

Staff Total: 195 days Pupil Total: (pupils are required to attend for 190 days)

(Monday 3rd September 2018 is already fixed as an Inset day and the other four days are to be identified by schools. Coton Green Primary have worked with other schools to try and align our Inset days where possible).

Coton Green Kids' Zone

Breakfast Club

Runs from 8.00 am – 8.45 am

Please be aware food cannot not be prepared after 8.30 am.

Thank you for your co-operation

REMINDER

It is school policy that dogs are not allowed on school premises at any time.

This includes leaving dogs unattended at school entrances.

The safety of all in our learning family is our number one priority.

Thank you for your continued co-operation.

Coton Green Kids' Zone

Monday to Friday

8.00 am – 8.45 am and 3.30 pm – 5.30 pm

If you wish to arrange a long term booking in advance, please see the Kids' Zone team

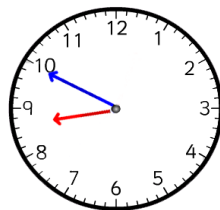
❖	Breakfast Club	£3.25 per day
❖	After School Club	£7.00 per day
❖	Both (wrap around care)	£10.00 per day
❖	Sibling rate for wrap around care	£9.00 per day

Please complete the booking form and send in to the school office or direct to the Kids' Zone club the week before to avoid disappointment.

Payment via ParentPay please.

Booking forms are available from either the school office or Kids' Zone team

NOTICE FOR PARENTS / CARERS



School punctuality is important and we would like to thank parents for their commitment in ensuring children arrive in good time for the 8:50 early work opening.

Please also be aware that children who are on site are the responsibility of parents and carers until handover at the classroom doors at 8:50.

During this time, it is important that children uphold the same high standards of behaviour as they do during school time.

We thank you in advance for your co-operation in this matter.

Food Allergies

If your child has a food allergy, please collect a 'Chartwells Special Diet Request Form' from the school office.

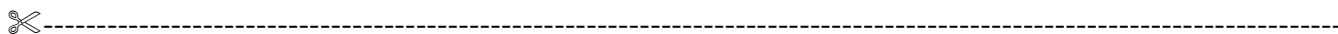
Morning Break Sales

Toast	20p	American Pancakes	35p
Cheese on Toast	50p	Jam on Toast	30p
Tea Cake	35p	Half Bagel (toasted)	30p
Half Cheese Bagel	45p	Oatcake with Cheese	60p
Fruit Pot	30p	Crumpet with honey	30p
Veggie Sticks	25p		

500ml Water	35p	Fresh Milk	20p
Flavoured Milk	60p	Orange/Apple Shot 85ml	30p
Fruit Juice Beaker 150ml	35p	Hot Chocolate	50p

Please complete your menu choice for the week on a Monday morning to avoid disappointment.

Thank you



Week Commencing 4 th February 2019			Week 3	
Child's Name:			Class:	
<i>Monday</i>	Mozzarella & Tomato Pizza with Jacket Wedges Green Beans, Sweetcorn Fresh seasonal Salad Bar	(v) Baked Bean & Cheese Wrap Green Beans, Sweetcorn Fresh seasonal Salad Bar	Jacket Potato with a choice of filling	Choice of Assorted Sandwiches
<i>Tuesday</i>	Pork Sausages with Creamy Mashed Potato, Broccoli, Sweetcorn Fresh Seasonal Salad Bar	(V) Vegetable Lasagne Broccoli, Sweetcorn Fresh seasonal Salad Bar	Jacket Potato with a choice of filling	Choice of Assorted Sandwiches
<i>Wednesday</i>	Roast Turkey with Roast Potatoes & Gravy Seasonal Cabbage, Carrot Batons Fresh Seasonal Salad Bar	(v) Quorn Roast with Roast Potatoes & Gravy Seasonal Cabbage, Carrot Batons Fresh seasonal Salad Bar	Jacket Potato with a choice of filling	Choice of Assorted Sandwiches
<i>Thursday</i>	Beef Lasagne with Garlic and Herb Bread Wedge. Roasted Vegetables Fresh Seasonal Salad Bar	(v) Vegetable Korma with Rice Roasted Vegetables Fresh seasonal Salad Bar	Jacket Potato with a choice of filling	Choice of Assorted Sandwiches
<i>Friday</i>	Golden Cod Fish Fingers or Crispy Salmon Filet Fish Fingers with Chips Peas, Carrots, and Baked Beans Fresh Seasonal Salad Bar	(v) Quorn Sausage & Tomato Pasta Bake, Carrot Batons, Peas and Baked Beans Fresh seasonal Salad Bar	Jacket Potato with a choice of filling	Choice of Assorted Sandwiches
Subject to availability				