

1st October 2018



Headteacher's Award



Friday 28th September 2018

DB Birch
Mia P

CW Maple
Lila D-T

SR Hazel
Oscar T

LSM Rowan
Maddison P

LST Hawthorn
Zane T

SH Beech
Amy S

ELP Holly
Oana B

JT Ash
Ben N

RN Sycamore
Hanna S



w/c Monday 1st October

Swimming Year 4

Please do not forget your swimming kit!



Class of the Week

17th – 21st September

Miss Coton's Class – 100%

(Whole School attendance for
the week: 97.54%)

Whole School current attendance: 97.21%

(Target for 2018-19: 97%)

Upcoming Dates

OCTOBER

Monday 1st

Y4 Swimming

Wednesday 3rd

Y1/2 Gingerbread baking

Thursday 4th

Y2 Parents' Lunch

Friday 5th

Headteacher's Award Assembly

Monday 8th, Tuesday 9th, Wednesday 10th

Y3/4 School Visit

Friday 12th

School Photos

(Please remember to return your permission
slip as no slip, no photo)

Tuesday 16th

Y4 Inspire Workshop

Tuesday 16th & Wednesday 17th

KS1 & KS2 Film Nights

Thursday 18th

Harvest Festival Assembly

Friday 19th

Headteacher's Award Assembly

Monday 22nd & Wednesday 24th

Parent Consultations

Wednesday 24th

EYFS Inspire Workshop

EXTRA CURRICULA ACTIVITIES

Lunchtime

Afterschool

Monday

Tuesday

Wednesday

Thursday

Friday

Cross Country

Football

Netball

Singing Club
Cross Country

Aston Villa KS2 (3 of 6)

Library Club 3.30 pm – 4.00 pm

NOTICE FOR PARENTS / CARERS



School is open to pupils from 8.50am for early work.

We cannot be held responsible for children being left unsupervised on the playground before this time.

Pupils are expected to be in class by 8.50am so they can start their learning briskly.

Register is taken at 9.00am prompt.

Your PTFA Needs You!

The School PTFA is an excellent way to bring together parents, teachers and others to raise money and support the school. We at Coton Green PTFA pride ourselves on hosting regular events and raising money to put back into the school for the benefit of the pupils.

As a group we meet a couple of times each term and support and attend events when our time allows.

We are always looking for support at events as well as on the PTFA for planning and preparing our fun events. We appreciate that people are busy with family lives and work so any time commitment that you could offer as a member of the PTFA would be hugely appreciated.

If you would be interested in finding out more about joining the PTFA please do get in touch with a member of the PTFA or leave your name and contact details with a member of staff in the office and we will get in touch.

Many thanks

Dear All

October is 'Walk to School' month. At the end of the month there are certificates for those that walk to school.

We would like you to record your active travel and return this to your class teacher at the end of October to claim your certificate!

Happy walking, peddling or scooting!

Miss Wesley

What is Active Travel?

- 1) Walking**
- 2) Cycling**
- 3) Park & Stride**
- 4) Sharing a car with friends**
- 5) Scooting**
- 6) Catching the bus**

Mark off the days you 'active travel' to school!

Sept 

Week 1	M	T	W	T	F
Week 2	M	T	W	T	F
Week 3	M	T	W	T	F
Week 4	M	T	W	T	F

Oct 

Week 1	M	T	W	T	F
Week 2	M	T	W	T	F
Week 3	M	T	W	T	F
Week 4	M	T	W	T	F

Nov  

Week 1	M	T	W	T	F
Week 2	M	T	W	T	F
Week 3	M	T	W	T	F
Week 4	M	T	W	T	F

Dec 

Week 1	M	T	W	T	F
Week 2	M	T	W	T	F
Week 3	M	T	W	T	F

School Dinners

A reminder that all children who have moved into Year 3 will now need to pay for their school dinners which are priced at £2.25 (*please pay via ParentPay*).

School Milk

If your child is over 5 years of age and would like milk at a cost of 25p, please inform your child's teacher.

Data Collection Information

Please inform school of changes to your address or telephone numbers to enable school to keep records up to date

Thank you

Stranger Danger Alert

After reports from other local schools of pupils being approached by two men in a black transit van, our teachers spoke to our older children about keeping safe around 'strangers'.

Please reinforce this message, especially if your children walk to and from school without adults.

School Photograph Consent Slips

As you know, due to new Data Protection regulations we now require **permission** for your child to have photographs taken with an external company.

Remember we will assume that you **do not want your child's** photograph taken if you fail to return your slips.

Thank you

Morning Break Sales

Toast	30p	Veggie Stick	30p
Cheese on Toast	60p	Jam on Toast	35p
Tea Cake	35p	Half Bagel (toasted)	30p
Half Cheese Bagel	45p	Oatcake with Cheese	60p
Fruit Pot/Veggie Pot	35p	Crumpet	35p
Veggie Sticks	35p	Scotch Pancakes	35p
Small Water	30p	Fresh Milk	25p
Flavoured Milk	60p	Orange Shot 85ml	40p
Orange & Apple Juice	35p	Hot Chocolate	50p

REMINDER

It is school policy that dogs are not allowed on school premises at any time.

This includes leaving dogs unattended at school entrances.

The safety of all in our learning family is our number one priority.

Thank you for your continued co-operation.

Coton Green Primary School – School Terms and Holiday Dates 2018/2019

Autumn Term 2018

Staff: Monday 3 September **Inset Day:1**

Pupils: Tuesday 4 September

Staff: Friday 26th October **Inset Day: 2**

Holiday: Monday 29 October - Friday 2 November

Staff: Monday 5th November **Inset Day: 3**

Term ends: Friday 21 December

Holiday: Monday 24 December - Friday 4 January

Spring Term 2019

Term starts: Monday 7 January

Half term: Monday 18 February - Friday 22 February

Term ends: Friday 12 April

Holiday: Monday 15 April - Friday 26 April

Easter Sunday: Sunday 21 April

Summer Term 2019

Term starts: Monday 29 April

May Day: Monday 6 May

Half term: Monday 27 May - Friday 31 May

Term ends: Monday 22 July **Inset Day: 4**

Holiday: Tuesday 23 July - Friday 30 August

There is 1 other Inset day to be confirmed.

Staff Total: 195 days Pupil Total: (pupils are required to attend for 190 days)

(Monday 3rd September 2018 is already fixed as an Inset day and the other four days are to be identified by schools. Coton Green Primary have worked with other schools to try and align our Inset days where possible).

Coton Green Kids' Zone

Monday to Friday

8.00 am – 8.45 am and 3.30 pm – 5.30 pm

If you wish to arrange a long term booking in advance, please call in to the school office

- ❖ Breakfast Club £3.25 per day
- ❖ After School Club £7.00 per day
- ❖ Both (wrap around care) £10.00 per day
- ❖ Sibling rate for wrap around care £9.00 per day

Please complete the booking form and send in to the school office the week before do avoid disappointment.

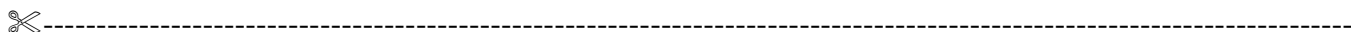
Payment via ParentPay please.

Booking forms are available from either the school office or Play Leader

Lunch Reminder

Please complete your menu choice for the week on a Monday morning to avoid disappointment.

Thank you



Week Commencing 1 ST October 2018			Week 1	
Child's Name:		Class:		
<i>Monday</i>	(v) Mozzarella & Tomato Pizza with Pasta Salad, Carrot Batons, Choice of Fresh Seasonal Salads	(v) Cheese Wrap Carrot Batons Choice of Fresh Seasonal Salads	Jacket Potato with a choice of filling	Choice of Assorted Sandwiches
<i>Tuesday</i>	Chicken Mayo Burger with Jacket Wedges, Green Beans, Choice of Fresh Seasonal Salads	(v) Vegetable & Noodle Stir Fry Green Beans Choice of Fresh Seasonal Salads	Jacket Potato with a choice of filling	Choice of Assorted Sandwiches
<i>Wednesday</i>	Savoury Beef with Rice Broccoli, choice of Fresh Seasonal Salads	(v) Macaroni Cheese & Sweetcorn Bake Broccoli, choice of Fresh Seasonal Salads	Jacket Potato with a choice of filling	Choice of Assorted Sandwiches
<i>Thursday</i>	Roast Pork with Roast Potatoes & Gravy, Spring Cabbage, choice of fresh Seasonal Salads	(v) Quorn Roast With Roast Potatoes & Gravy, Spring Cabbage, choice of fresh Seasonal Salads	Jacket Potato with a choice of filling	Choice of Assorted Sandwiches
<i>Friday</i>	Crispy Fish & Chips with Carrot Batons & Peas, Baked Beans Choice of Fresh Seasonal Salads	(v) Veggie Hot Dog with Chips, Carrot Batons & Peas, Baked Beans Choice of Fresh Seasonal Salads	Jacket Potato with a choice of filling	Choice of Assorted Sandwiches
Subject to availability				